

Lesson 21: Managing Group Policy Objects

MOAC 70-411: Administering
Windows Server 2012

Overview

- Exam Objective 6.3: Manage Group Policy Objects (GPOs)
- Managing Group Policy Objects

Managing Group Policy Objects

Lesson 21: Managing Group Policy Objects

Group Policy Object (GPO) Components

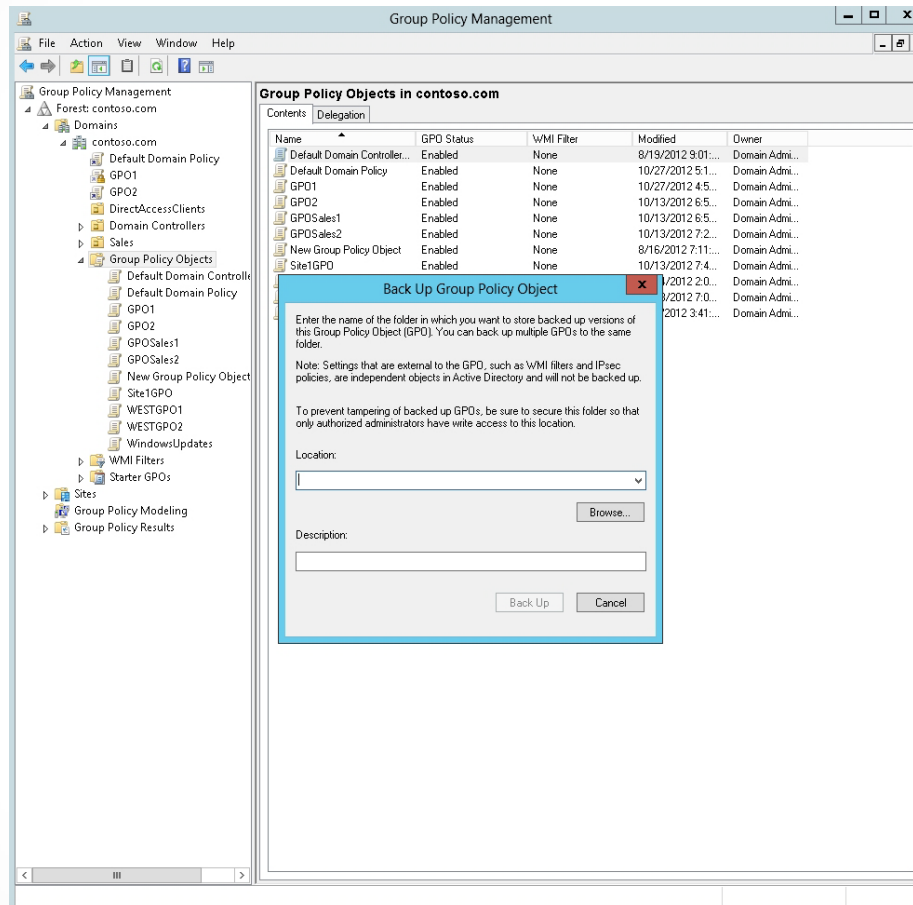
GPOs consist of two components:

- Group Policy Container (GPC)
- Group Policy Template (GPT)

Backing Up and Restoring GPOs

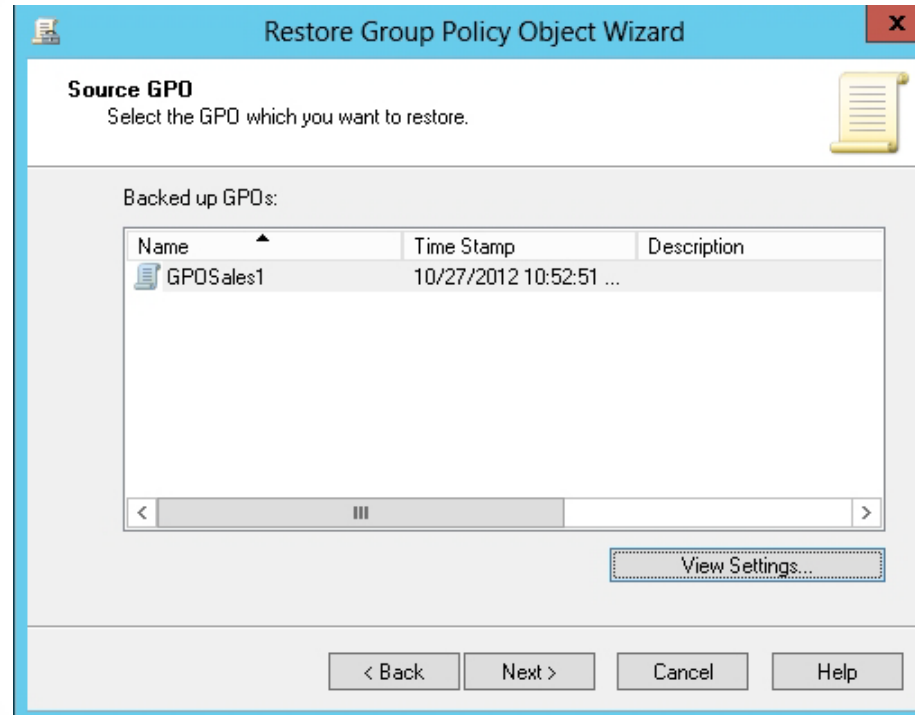
- Back up all GPOs or individual GPOs using the Group Policy Management Console.
- Every time a backup is performed, a new backup version of the GPO is created.

Back Up GPOs



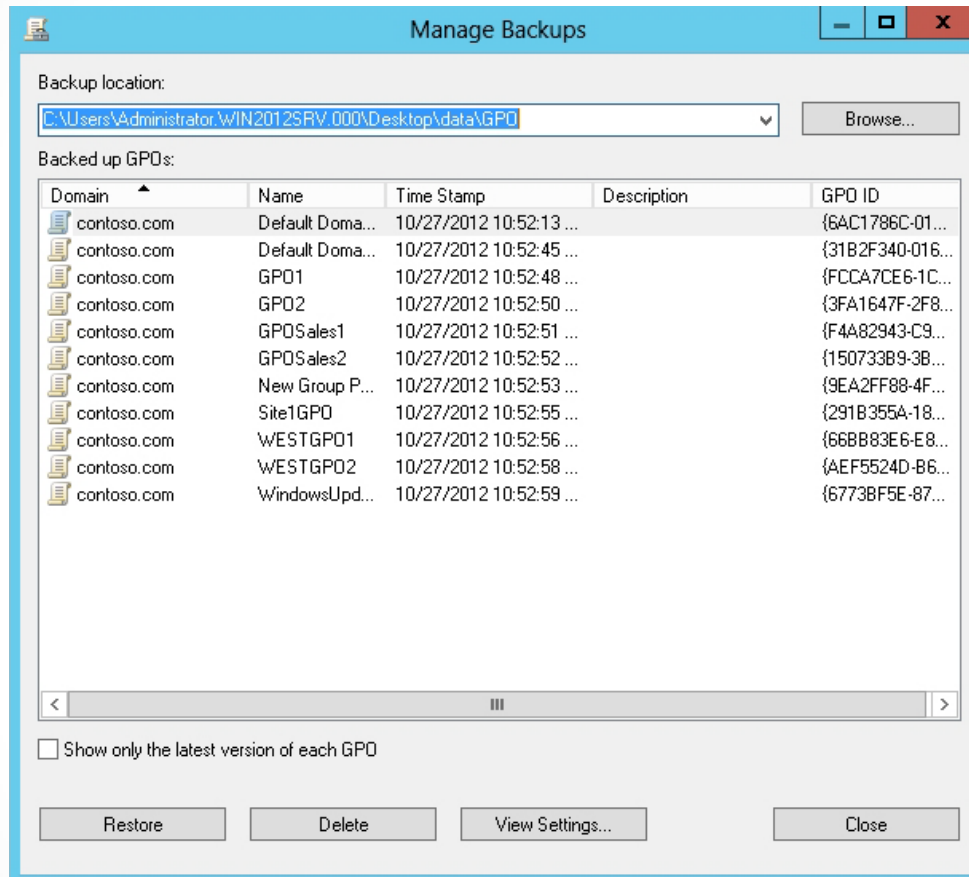
Opening the Back Up Group Policy Object dialog box

Restore a GPO



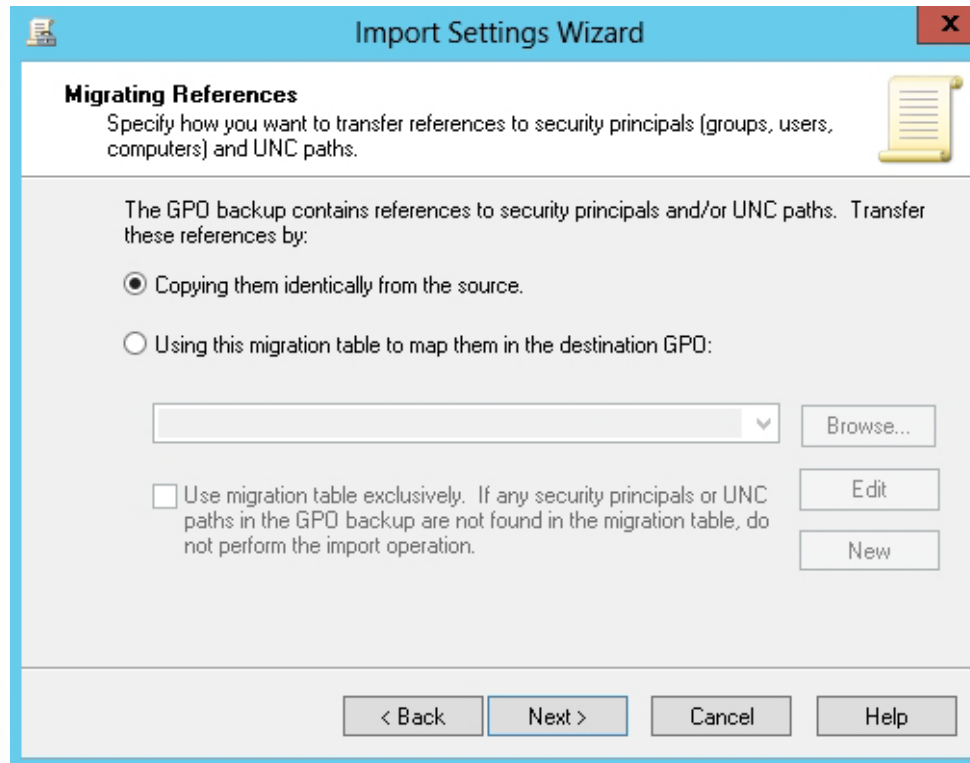
Restoring a GPO

Manage Backups



Managing GPO Backups

Import GPO Settings



The screenshot shows the 'Import Settings Wizard' dialog box, specifically the 'Migrating References' step. The title bar reads 'Import Settings Wizard' with a close button (X) on the right. The main heading is 'Migrating References' with a yellow scroll icon to its right. Below the heading is the instruction: 'Specify how you want to transfer references to security principals (groups, users, computers) and UNC paths.' The main content area contains the text: 'The GPO backup contains references to security principals and/or UNC paths. Transfer these references by:' followed by two radio button options. The first option, 'Copying them identically from the source.', is selected. The second option is 'Using this migration table to map them in the destination GPO:'. Below this second option is a text box with a dropdown arrow and a 'Browse...' button. At the bottom of this section is a checkbox labeled 'Use migration table exclusively. If any security principals or UNC paths in the GPO backup are not found in the migration table, do not perform the import operation.' To the right of this checkbox are three buttons: 'Edit', 'New', and 'Cancel'. At the very bottom of the dialog are four buttons: '< Back', 'Next >', 'Cancel', and 'Help'.

Import Settings Wizard

Migrating References
Specify how you want to transfer references to security principals (groups, users, computers) and UNC paths.

The GPO backup contains references to security principals and/or UNC paths. Transfer these references by:

Copying them identically from the source.

Using this migration table to map them in the destination GPO:

Use migration table exclusively. If any security principals or UNC paths in the GPO backup are not found in the migration table, do not perform the import operation.

Specifying how to transfer references
to security principals

Copy a GPO



Specifying how permissions are being copied or not

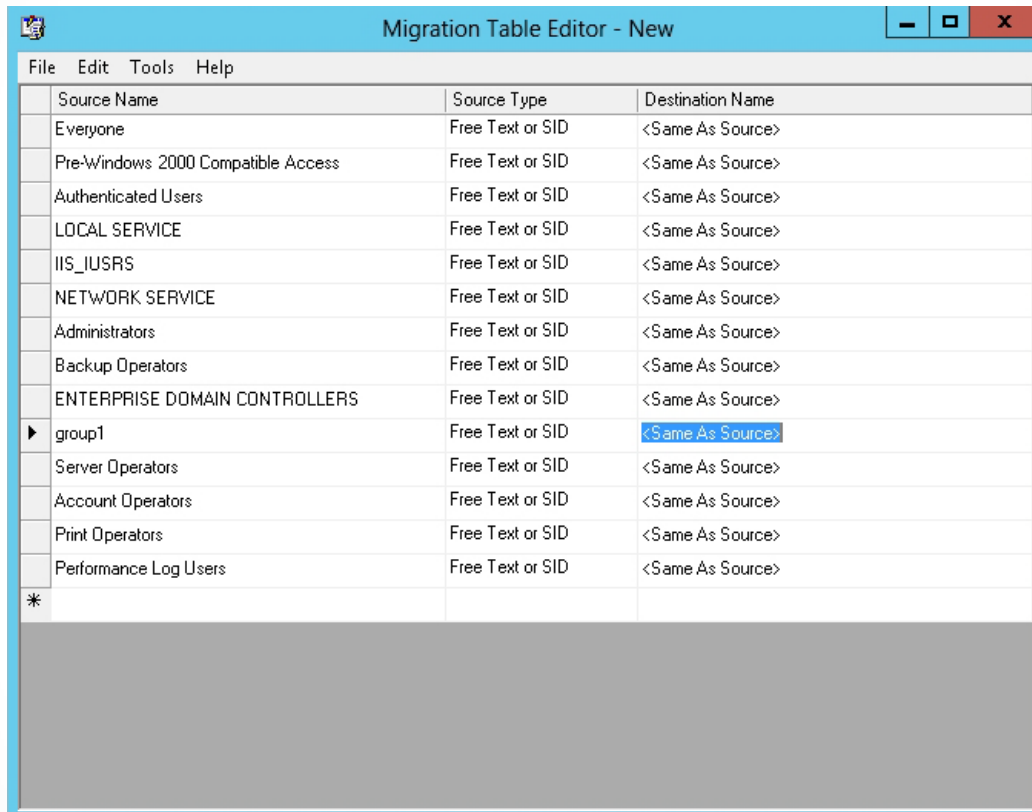
Using a Migration Table

A **migration table** is a file that:

- Maps references to users, groups, computers, and UNC paths in the source GPO to new values in the destination GPO.
- Consists of one or more mapping entries.

When you specify a migration table while performing an import or copy, each reference in the source GPO will be replaced with a target reference.

Use a Migration Table

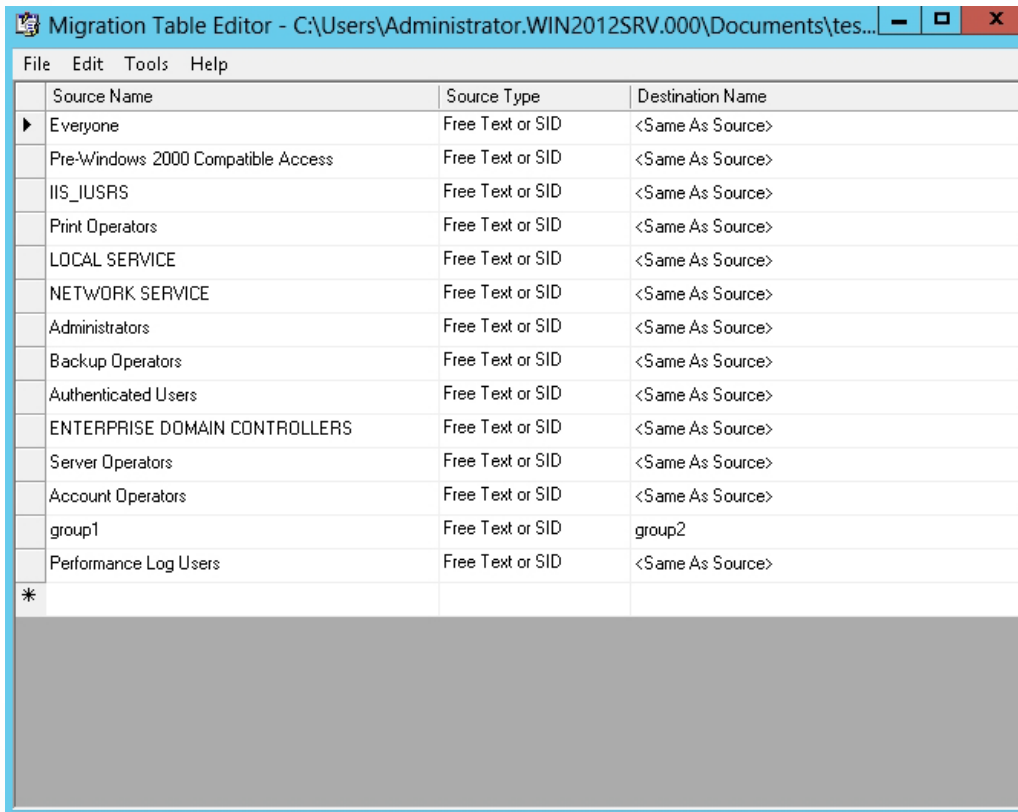


The screenshot shows the 'Migration Table Editor - New' window. It features a menu bar with 'File', 'Edit', 'Tools', and 'Help'. Below the menu is a table with three columns: 'Source Name', 'Source Type', and 'Destination Name'. The table contains the following data:

Source Name	Source Type	Destination Name
Everyone	Free Text or SID	<Same As Source>
Pre-Windows 2000 Compatible Access	Free Text or SID	<Same As Source>
Authenticated Users	Free Text or SID	<Same As Source>
LOCAL SERVICE	Free Text or SID	<Same As Source>
IIS_IUSRS	Free Text or SID	<Same As Source>
NETWORK SERVICE	Free Text or SID	<Same As Source>
Administrators	Free Text or SID	<Same As Source>
Backup Operators	Free Text or SID	<Same As Source>
ENTERPRISE DOMAIN CONTROLLERS	Free Text or SID	<Same As Source>
▶ group1	Free Text or SID	<Same As Source>
Server Operators	Free Text or SID	<Same As Source>
Account Operators	Free Text or SID	<Same As Source>
Print Operators	Free Text or SID	<Same As Source>
Performance Log Users	Free Text or SID	<Same As Source>
*		

Populating the migration table

Use a Migration Table



Migration Table Editor - C:\Users\Administrator.WIN2012SRV.000\Documents\tes...

File Edit Tools Help

Source Name	Source Type	Destination Name
Everyone	Free Text or SID	<Same As Source>
Pre-Windows 2000 Compatible Access	Free Text or SID	<Same As Source>
IIS_IUSRS	Free Text or SID	<Same As Source>
Print Operators	Free Text or SID	<Same As Source>
LOCAL SERVICE	Free Text or SID	<Same As Source>
NETWORK SERVICE	Free Text or SID	<Same As Source>
Administrators	Free Text or SID	<Same As Source>
Backup Operators	Free Text or SID	<Same As Source>
Authenticated Users	Free Text or SID	<Same As Source>
ENTERPRISE DOMAIN CONTROLLERS	Free Text or SID	<Same As Source>
Server Operators	Free Text or SID	<Same As Source>
Account Operators	Free Text or SID	<Same As Source>
group1	Free Text or SID	group2
Performance Log Users	Free Text or SID	<Same As Source>
*		

Specifying the changed destination value

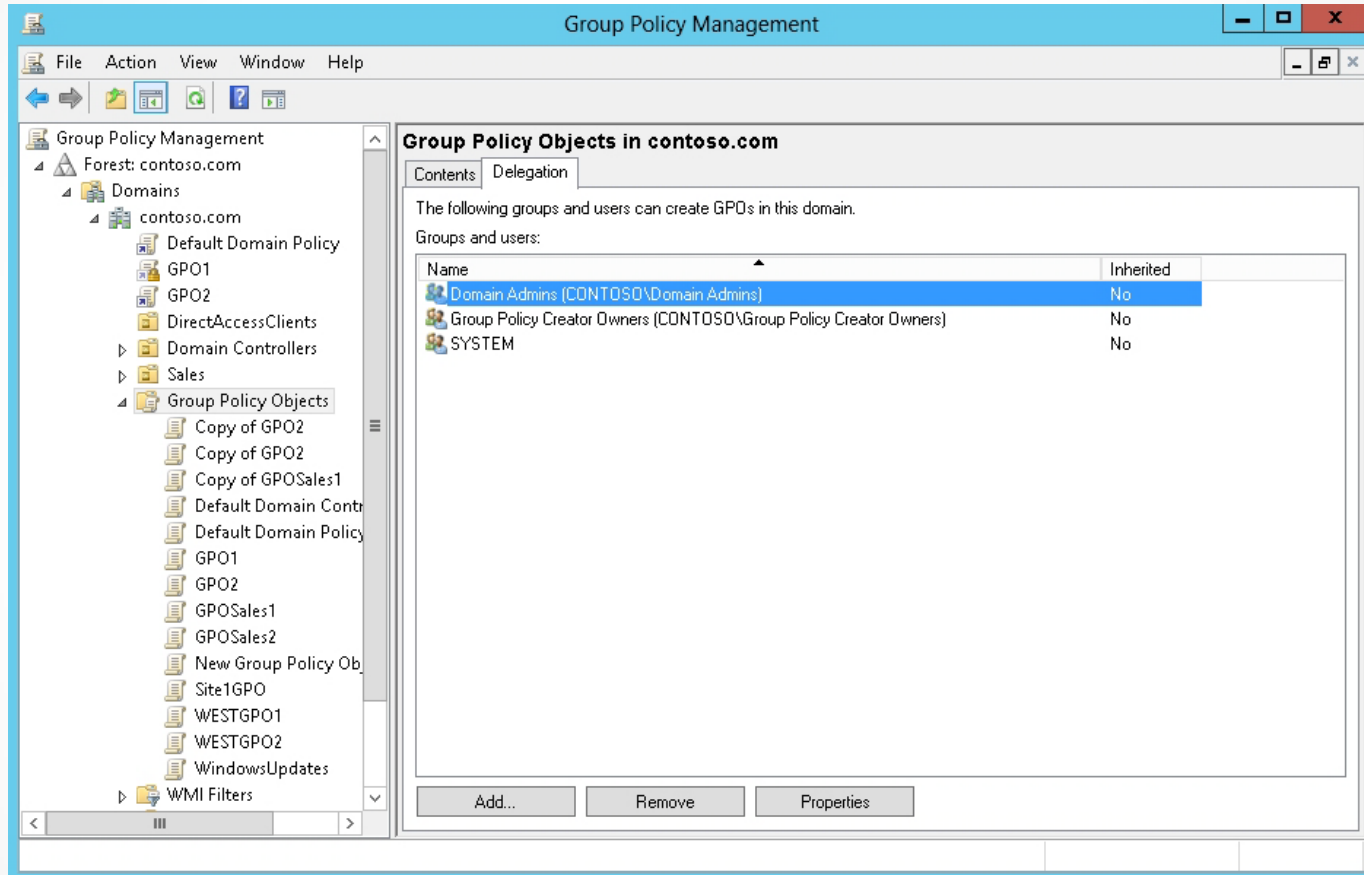
Resetting the Default GPOs

- The ***DCGPOFix.exe*** command can restore either or both the Default Domain Policy or the Default Domain Controllers Policy to their default settings.
- You must be a domain administrator to perform this task.

Delegating Group Policy Management

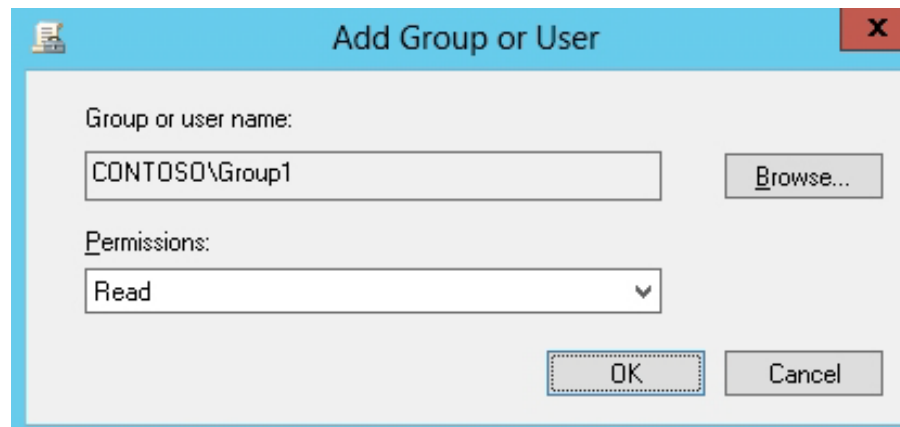
- **Delegation** enables you to give non-domain administrators permissions to manage group policies.
- When you grant a person or group permissions to create GPOs, they also are granted permissions to manage the GPOs they created.
- To delegate GPO permissions, use the Group Policy Management Console.

Specify Who Can Create GPOs



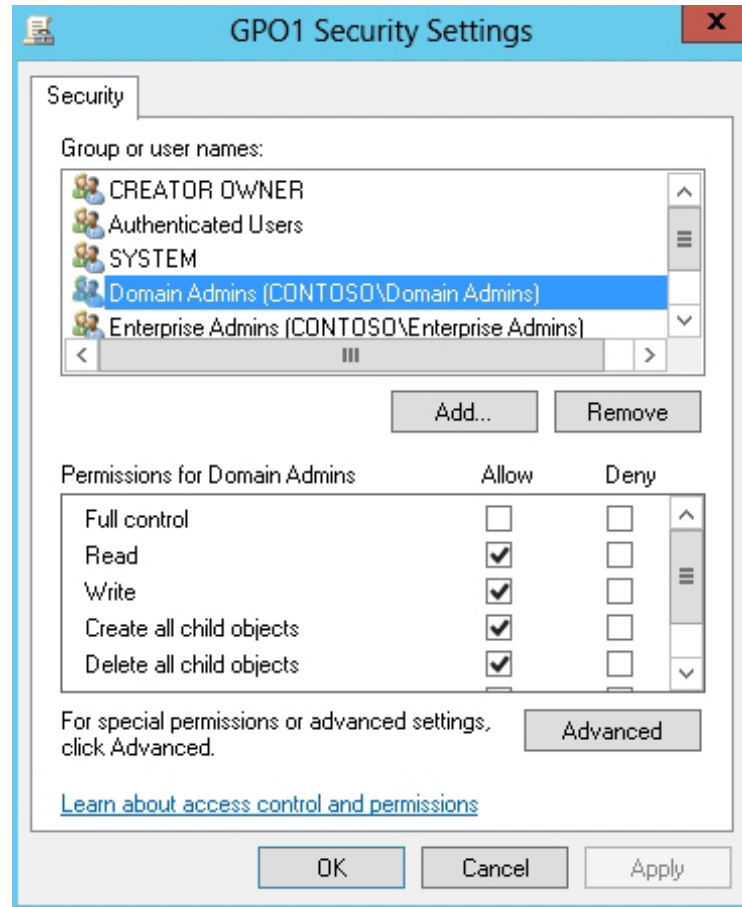
Managing GPO delegates using the Delegation tab

Specify Who Can Manage an Individual GPO



Assigning Permissions to a GPO

GPO Security Settings



Managing security settings for a GPO

Lesson Summary

- Although group policy settings are configured using GPOs, GPOs consist of two components: Group Policy Container (GPC) and Group Policy Template (GPT).
- The GPC is an Active Directory object stored in the Group Policy Objects container with the domain naming content of the directory.
- The settings are contained in the GPT, a collection of files stored in the SYSVOL (%SystemRoot%\SYSVOL\\Policies\) of each domain controller.
- If you back up a domain controller including the System State, you will back up all GPOs. However, you can back up and restore GPOs using the Group Policy Management Console.

Lesson Summary

- The Group Policy Management Console also has a Manage Backups feature. By using this feature, you can restore from backup, delete a backup, and view settings.
- You can import settings from a backed up GPO into an existing GPO. When you import a GPO, it imports only the GPO settings. It does not transfer the security links or security principals.
- You can copy a GPO by using the Group Policy Management Console in the same domain and across domains. Similar to copy and paste used with files, the copy option copies the existing GPO. When you paste it to the Group Policy Objects container, it is named copy of old_name.

Lesson Summary

- A migration table is a file that maps references to users, groups, computers, and UNC paths in the source GPO to new values in the destination GPO.
- The DCGPOFix.exe command can restore either or both the Default Domain Policy or the Default Domain Controllers Policy to their default settings.
- Delegation enables you to give non-domain administrators permissions to manage group policies.
- With users and groups, to give more granular control of who can manage, read, or is affected by a GPO, click the Advanced button from the Delegation tab, which opens the GPO Security Settings dialog box.

Copyright 2013 John Wiley & Sons, Inc.

All rights reserved. Reproduction or translation of this work beyond that named in Section 117 of the 1976 United States Copyright Act without the express written consent of the copyright owner is unlawful. Requests for further information should be addressed to the Permissions Department, John Wiley & Sons, Inc. The purchaser may make back-up copies for his/her own use only and not for distribution or resale. The Publisher assumes no responsibility for errors, omissions, or damages, caused by the use of these programs or from the use of the information contained herein.