

Tutorial 1 for Surety Maps

What are Precision Maps?

Read about Precision Maps

<http://www.farms.com/precision-agriculture/precision-maps/>

Surety Maps

Review Instructor Video

1 Surety Maps - Getting Started

Go to <https://www.agridatainc.com/> (control plus click to view link) to view Surety customized online mapping.

1. **Review** the information to get a good view of the services that it provides.

- Ag Applicators
- Land management
- Custom Reports.

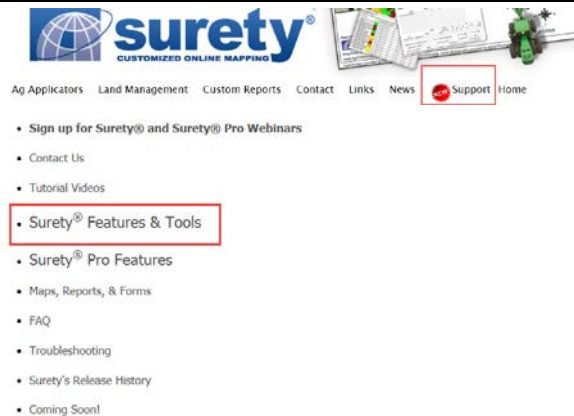
Be sure to review Ag applicators, land management and the custom reports to get a good view of the services that it provides.

1. Login to Surety Maps

User name: *SCCag4771* (user name changes every quarter)

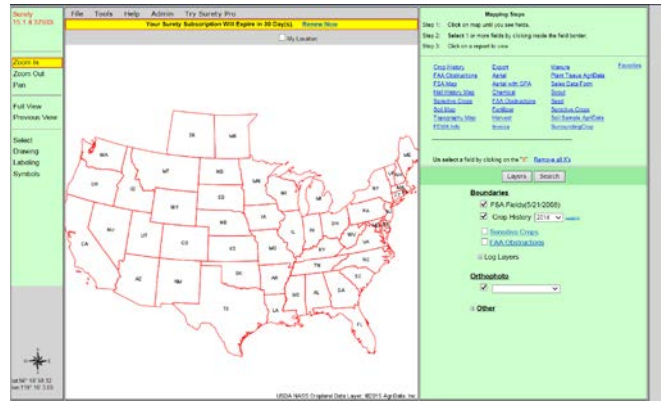
Password: will be given each quarter.

After logging in to Surety go to *Support* then *Surety Features and Tools* to find the location of their tutorials.

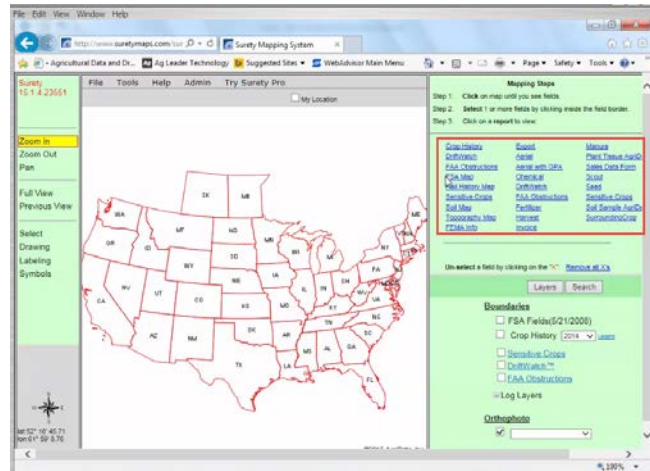


Getting Started

When you first log into Surety Maps you will see an online map of the United States.

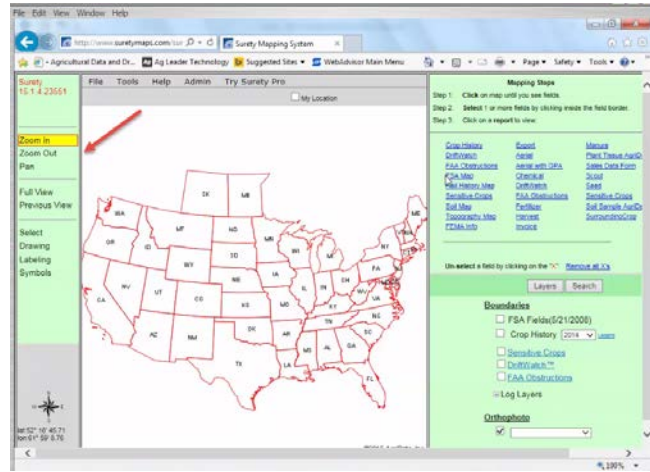


We are going to use Surety Maps to give us different types of reports which will include Crop History, DriftWatch, FSA maps; and soils maps.

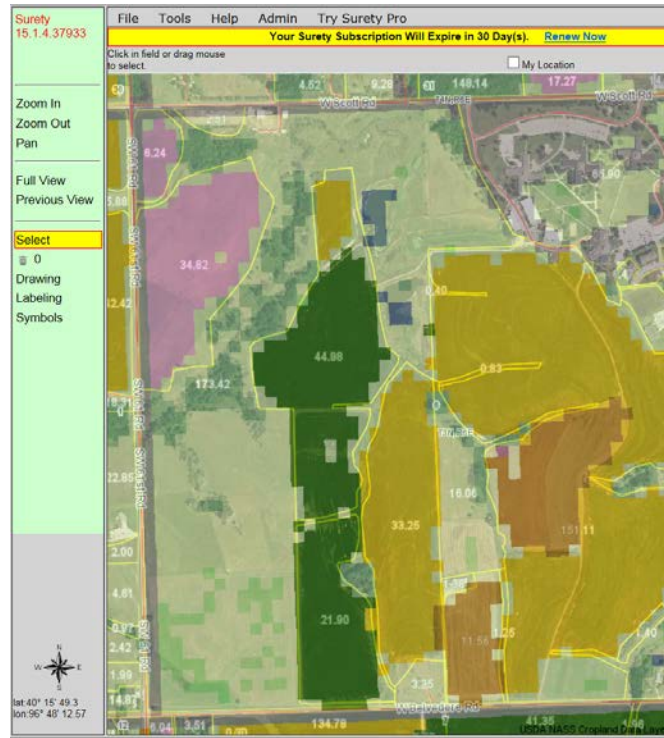


Down the left hand side you will see different options you can use: zoom in; zoom out; pan; full view; previous view.

We will be learning how to use the select; the drawing; labeling and symbols.



1. Using the zoom in and pan views **find** Southeast Community College in Beatrice NE. (Use the left mouse button to click where you want to zoom into or the roller if you have one).
2. You may zoom into your respective county also.



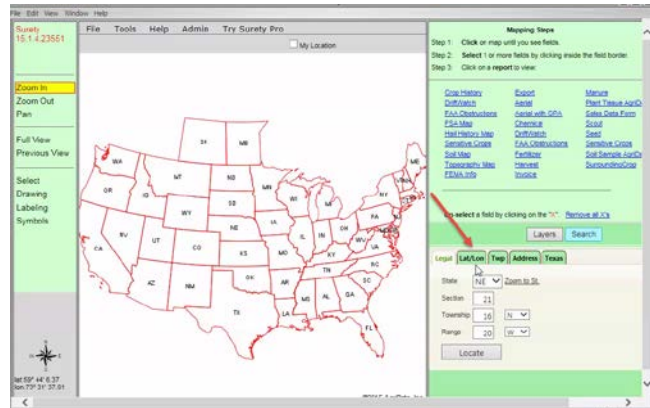
Continue on next page. . .

Tutorial 2 for Surety Maps

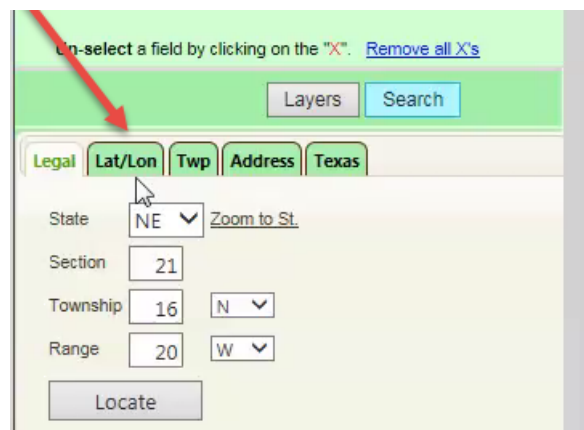
View Instructor Video

2 Surety Maps Working with maps

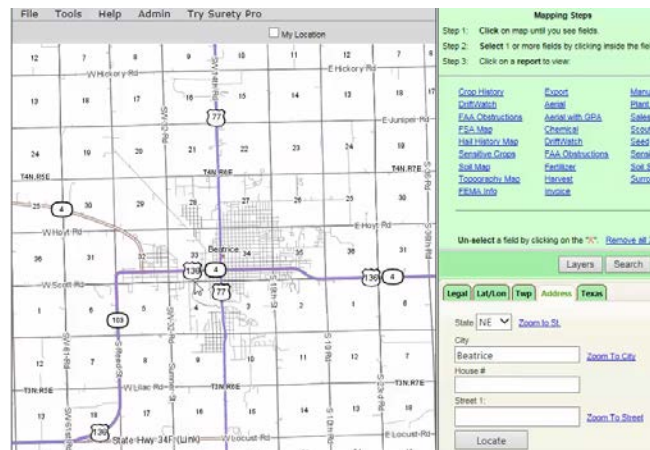
You can also use the Search Button on the right hand side to search for your location.



By clicking on the search button you can search if you have the legal description; the latitude and longitude; your township; address; or if you are in Texas it has Texas Land Survey with County Block and Section.

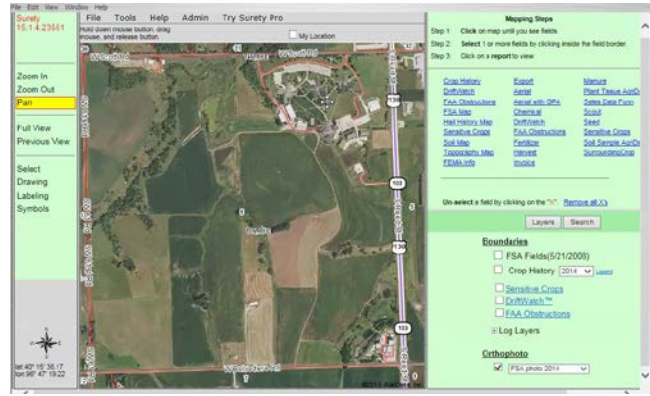


3. **Go to Address > Change the state to NE > type in Beatrice and click on zoom to city**



4. Using the zoom and pan find the SCC campus.

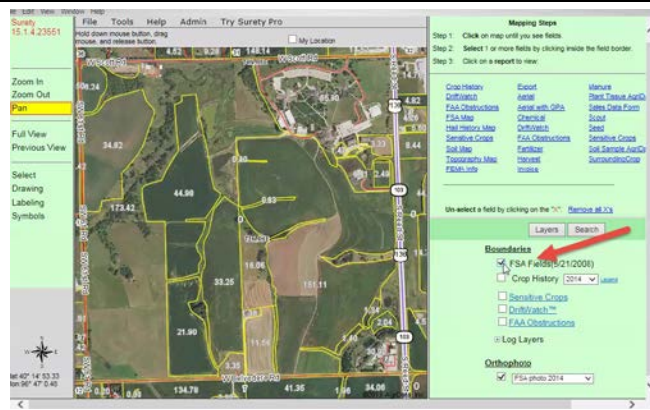
The image shows the campus grounds and fields.



Look at the FSA field data to see how they classified them. (FSA classifies our fields a little bit different.)

5. Underneath Boundaries select FSA Fields.

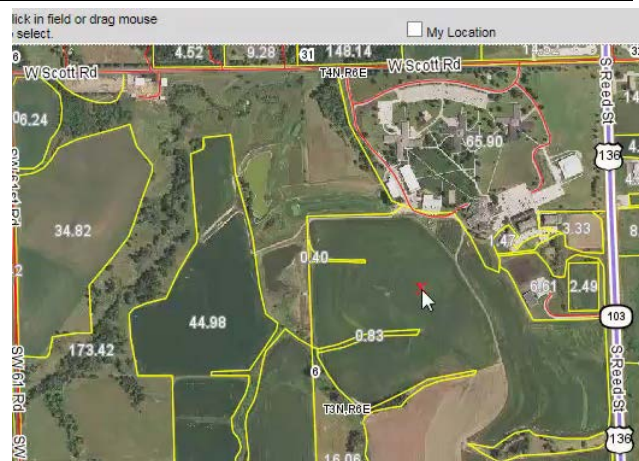
Note: It puts yellow boundary lines on the map.



6. Select one of the fields on a farm.

To select a field

Place your mouse cursor on the field you would like, and single left click in the middle of it. This puts a red X on the field. It will tell you the latitude and longitude of that X on the right hand side. You can then select a map/report from the right hand side of the screen to map these fields.



Reports

After selecting the field **review** the different reports that are available on the right hand side.

1. Select the FSA map

These reports are based on FSA maps (Farm Service Agency). These maps contain the same information that you would go to FSA offices to view.

The FSA map will open in another window. You could print out this map for your reference in the field.

2. Close out of that field.

Mapping Steps

Step 1: Click on map until you see fields.

Step 2: Select 1 or more fields by clicking inside the field border.

Step 3: Click on a report to view.

Crop History	Export	Manure	Favorites
FAA Obstructions	Aerial	Plant Tissue AgriData	
FSA Map	Aerial with GPA	Sales Data Form	
Hail History Map	Chemical	Scout	
Sensitive Crops	FAA Obstructions	Seed	
Soil Map	Fertilizer	Sensitive Crops	
Topography Map	Harvest	Soil Sample AgriData	
FEMA Info	Invoice	SurroundingCrop	

Un-select a field by clicking on the "X". [Remove all X's](#)

Layers Search



3. Select two fields to obtain soil data

4. Click on Soil Map

Surety 15.14.23551

File Tools Help Admin Try Surety Pro

Click on field using mouse to select

Zoom In Zoom Out Pan Full View Previous View

Select 2 Drawing Labeling Symbols

44.88 33.25 21.90 11.50 3.35 134.78 41.38 1.98 34.88 0.0

Lat 40° 15' 23.79 Lon 96° 47' 28.51

Mapping Steps

Step 1: Click on map until you see fields.

Step 2: Select 1 or more fields by clicking inside the field border.

Step 3: Click on a report to view.

Crop History	Export	Manure	Favorites
FAA Obstructions	Aerial	Plant Tissue AgriData	
FSA Map	Aerial with GPA	Sales Data Form	
Hail History Map	Chemical	Scout	
Sensitive Crops	FAA Obstructions	Seed	
Soil Map	Fertilizer	Sensitive Crops	
Topography Map	Harvest	Soil Sample AgriData	
FEMA Info	Invoice	SurroundingCrop	

Un-select a field by clicking on the "X". [Remove all X's](#)

Layers Search

Selecting Multiple Fields

Selected Acres: 0

Update Map Cancel

Tip: Un-select a field by clicking on the "X".

Last/Lon of last X

Lat 40° 15' 23.55 Lon 96° 47' 48.12

Lon Lat

Tutorial 3 for Surety Maps

Review Instructor Video

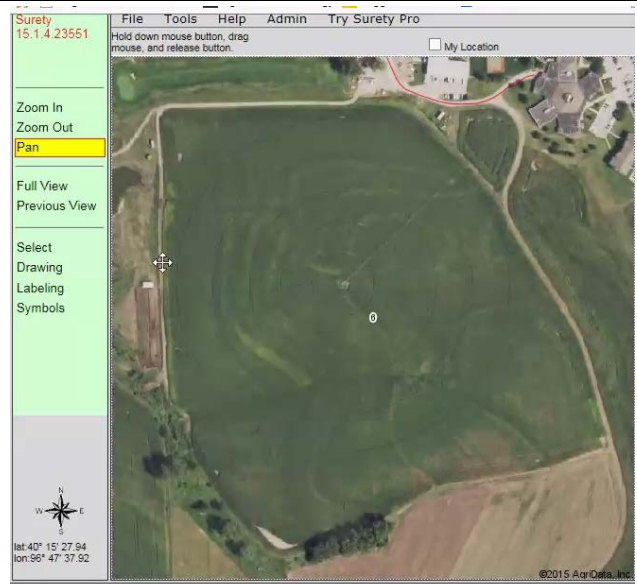
3 Surety Maps - Drawing a Map

Now you are going to actually draw the maps on here.

1. First **uncheck** *FSA fields* so the yellow lines will go away.

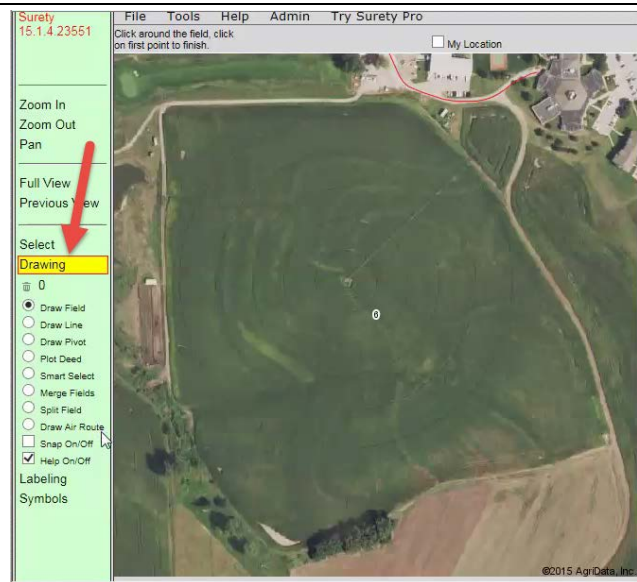
We are going to draw on the f9 field which is our pivot field.

2. **Zoom in** and **pan** to get the f9 field large enough to work with.



Under Drawing is: Draw Field; Draw Lines; Draw Pivot; Plot Deed; Smart Select; Merge Fields; Spilt Field; and so on.

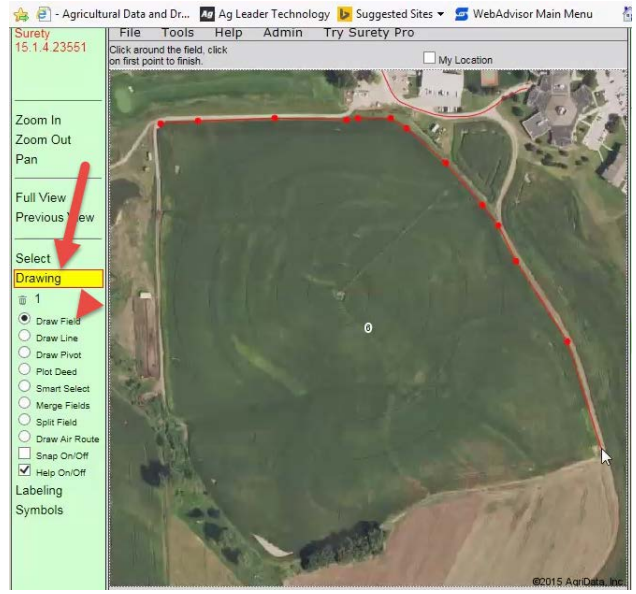
The ones that we are going to focus on are: Draw Fields; Draw Line; Draw a Pivot.



To draw click where you want to start drawing a field.

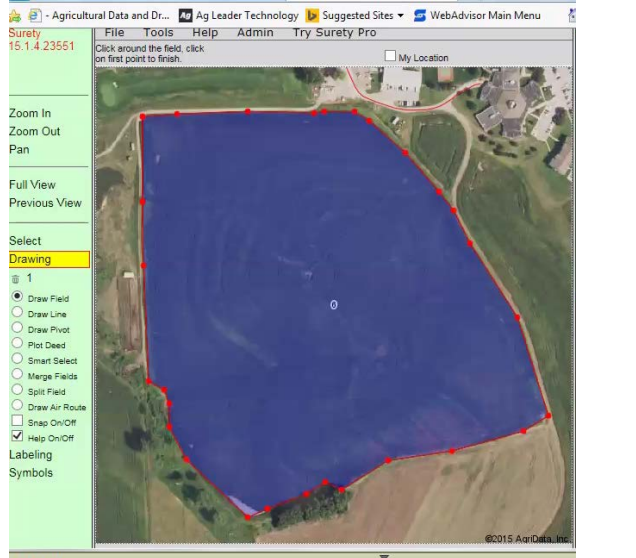
3. **Click on Draw Field**
4. Starting at the top left corner of the field; use a **left click** on mouse to place a point.

Note: Go around every nook and cranny.



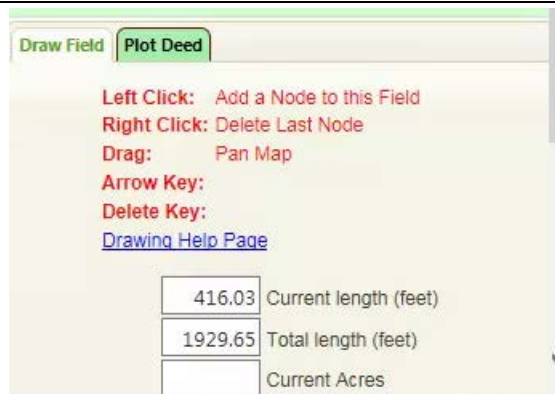
5. Continue **clicking** around the field to establish good boundaries.
6. **Double click** the mouse when you come back to the starting point.

Note: The field will turn blue.



On the right hand side it is going to tell you:

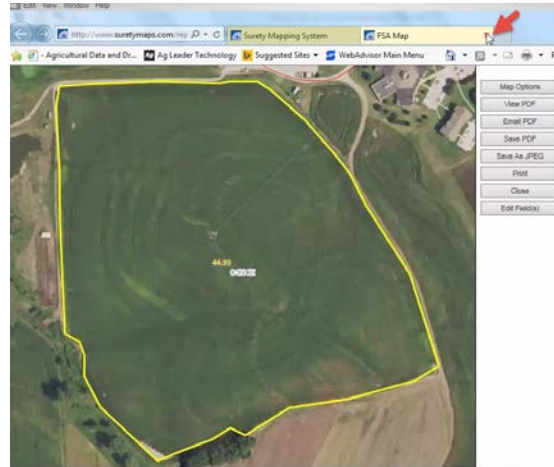
- Left Click will help you start a new field.
 - Right click will add a node to the selected field.
7. **Add a node** to the drawing.



Precision Ag Technology - Precision Maps Tutorial

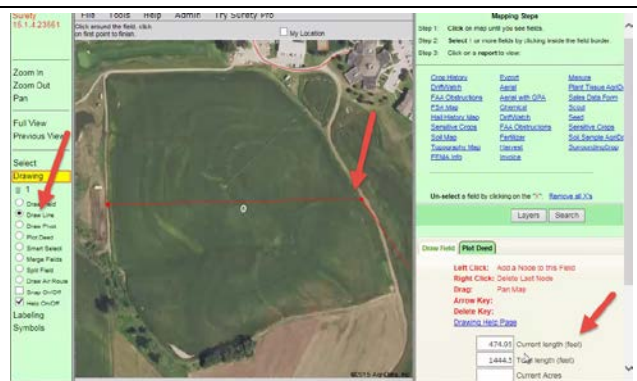
Now that we have the field drawn

8. **Select** the *FSA Maps* to view the boundary lines for the map.
9. **Exit** out of the map.



At this time we are going to draw a line on the map to measure the field.

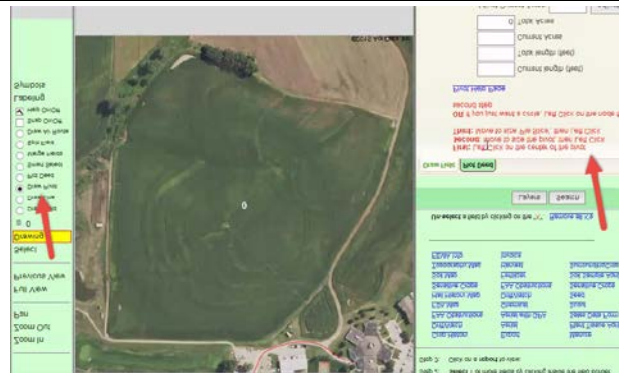
10. **Click** on the *trash can* to delete the drawing from the map.
11. **Draw a line** to measure across the field. Note dimension on right side.
12. **Delete the line** you just drew.



Now we are going to draw a pivot.

(Follow the direction on the right) It says

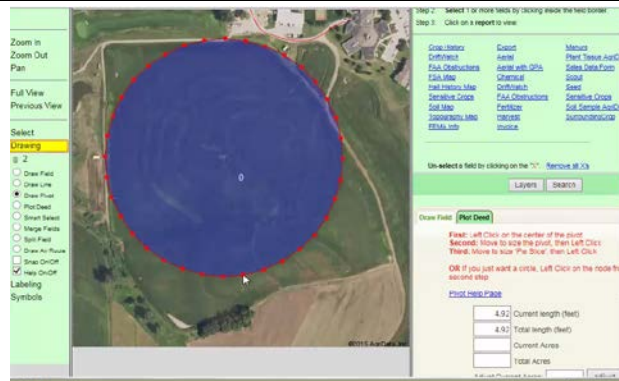
- First; left click on the pivot.
- Second move to the size of the pivot. Then left click
- Third: Move to size "Pie Slice", the left click.



1. **Left Click** and *draw out* the pivot.

Note: It will tell you how many feet on the right hand side.

2. Delete the pivot you just made and keep the boundaries you established for the next tutorial.



Surety Maps - Pivots

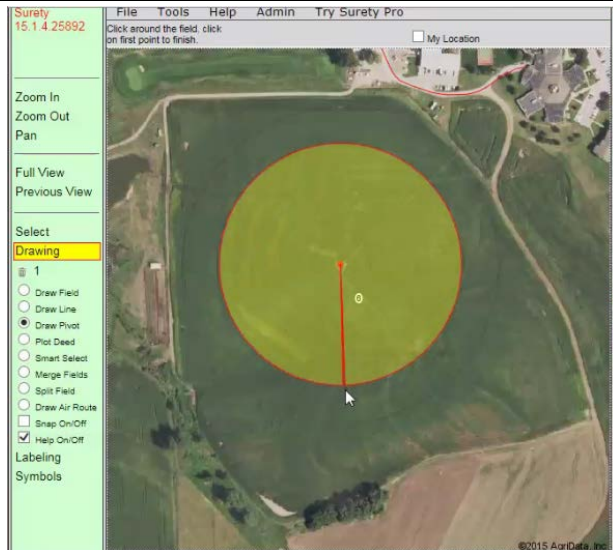
View Instructor Video

4 Surety Maps Pivot

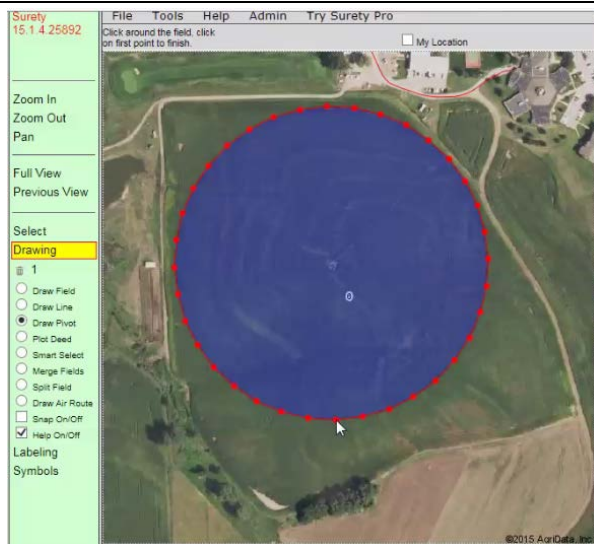
How to draw a pivot

Starting with the boundary map you drew in:

3. **Select *Drawing***
4. **Select *Draw pivot***
5. **Select the *center of the pivot*** with a left click on the mouse. Drag to the edge of the field

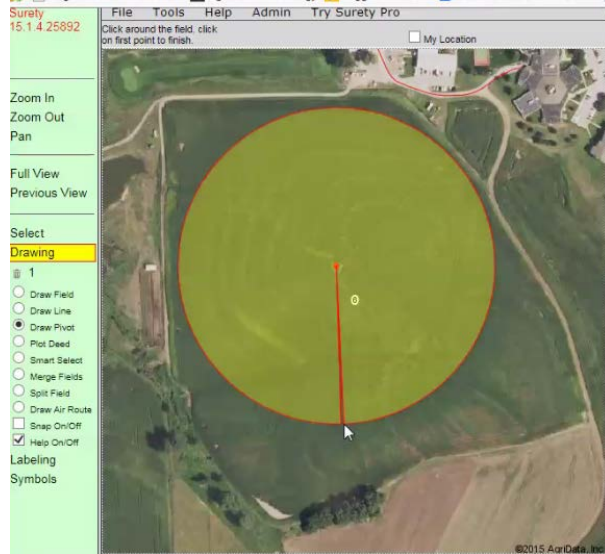


6. **Left click to stop; left click again** and you will see the blue pivot.
7. **Delete this *pivot*** for the next exercise

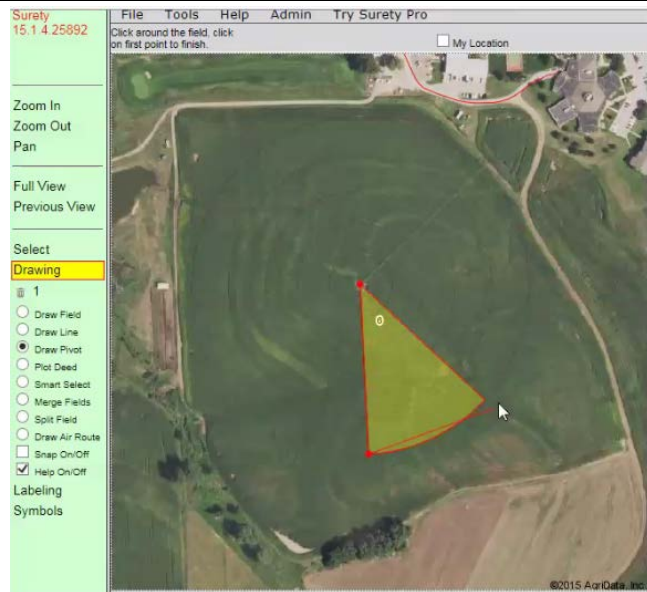


Drawing a ½ pivot

8. Select *Drawing*
9. Select *Draw pivot*
10. Select the *center of the pivot* with a left click on the mouse.



11. Select the center of the pivot with a left click on the mouse. Drag to the edge of the field
12. Left click and drag to the right to make a ½ pivot.



Surety Maps - Pivots

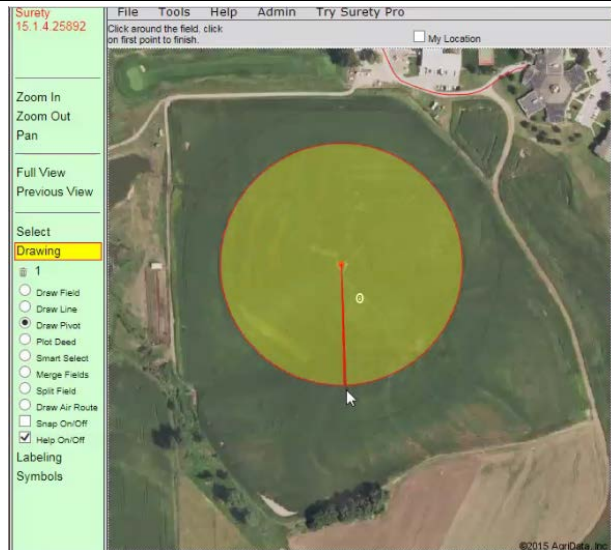
View Instructor Video

4 Surety Maps Pivot

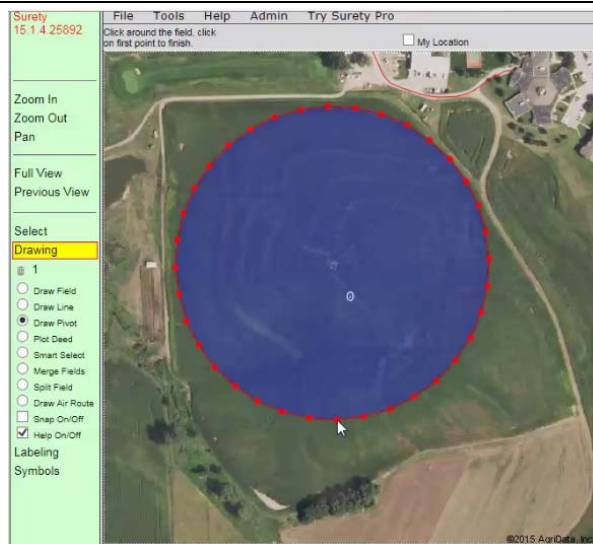
How to draw a pivot

Starting with the boundary map you drew in:

1. **Select *Drawing***
2. **Select *Draw pivot***
3. **Select the *center of the pivot*** with a left click on the mouse. Drag to the edge of the field

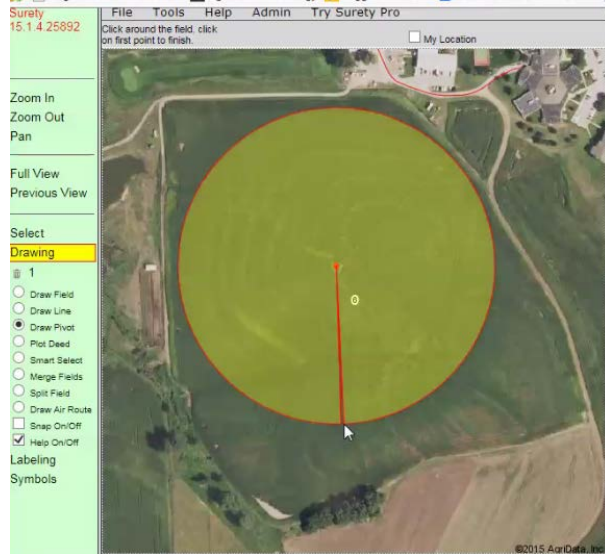


4. **Left click to stop; left click again** and you will see the blue pivot.
5. **Delete this *pivot*** for the next exercise

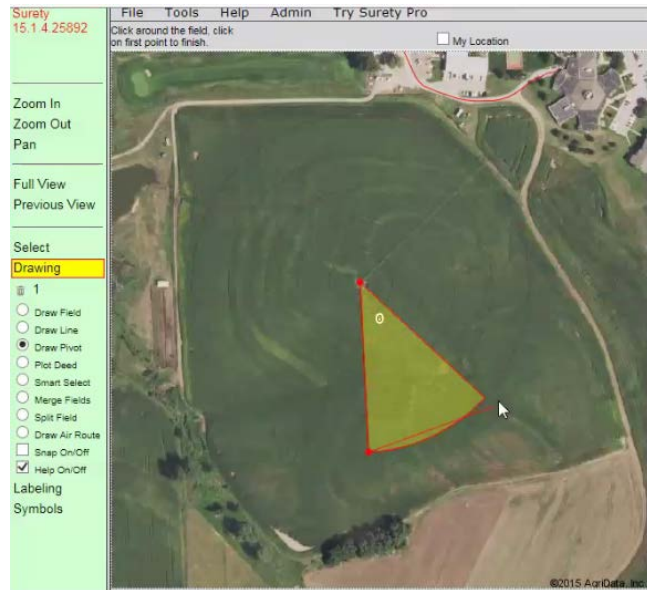


Drawing a ½ pivot

1. Select *Drawing*
2. Select *Draw pivot*
3. Select the *center of the pivot* with a left click on the mouse.



4. Select the center of the pivot with a left click on the mouse. Drag to the edge of the field
5. Left click and drag to the right to make a ½ pivot.



Surety Maps - Labeling

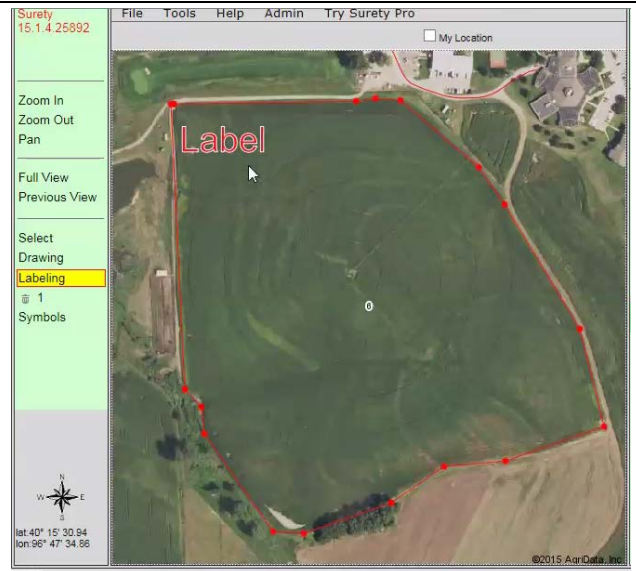
View Instructor Video

5 Surety Maps Labeling

How to Label

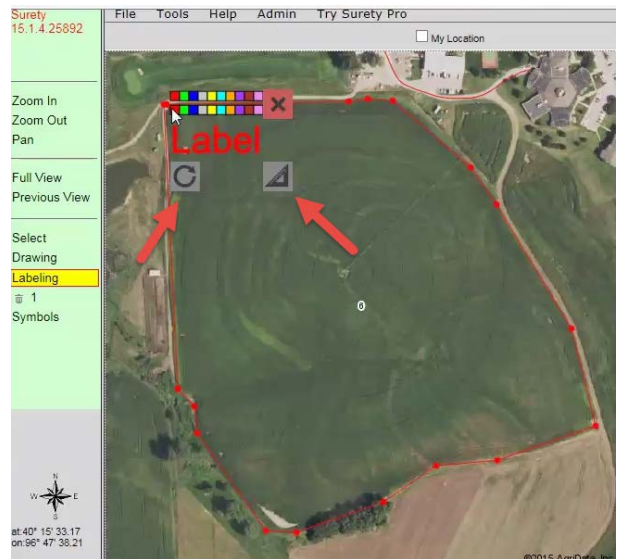
Starting with the boundary map you drew in:

1. **Select *Labeling***
2. **Click** inside the field where you want to put a label. The label size changes as you move drag the mouse.
3. Click again once you have the size you want.



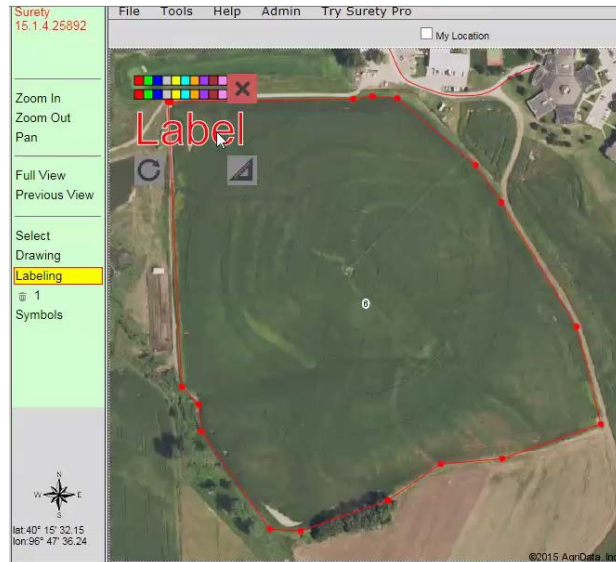
Once you click you will a color bar.

- **Select a color** for the *text* from the top row of colors.
- **Select a color** for the *outline of the text* from the bottom row of colors.
- **Rotate** the text.
- **Make the text** smaller or large by clicking on the icon bottom right of text.
- **Click on the X** to delete that label.

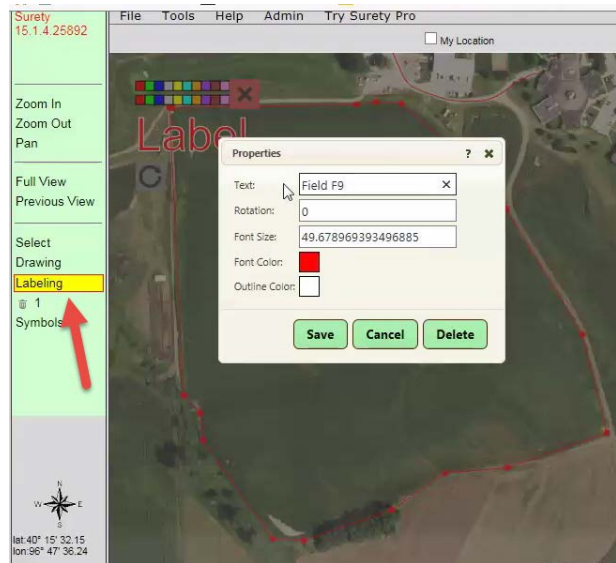


To change the label text

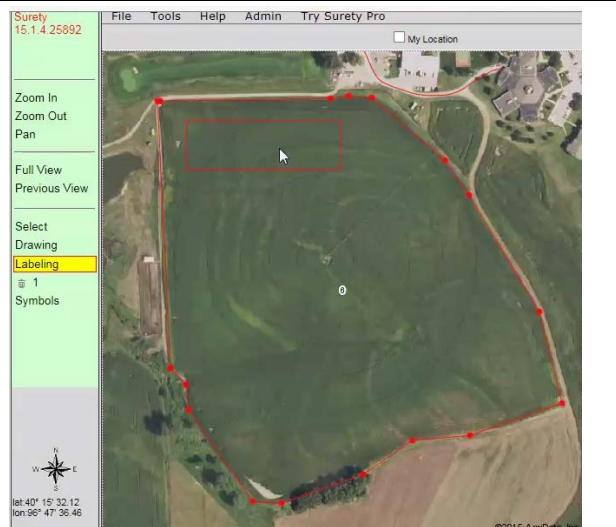
1. **Select** *Labeling*
2. **Click** inside the field where you want to put a label. The label size changes as you move drag the mouse.
3. Click again once you have the size you want.



4. **Double Click** on the word **Label**
5. **Type** in *Field f9*
6. **Select** a *color*
7. **Select** *Save*

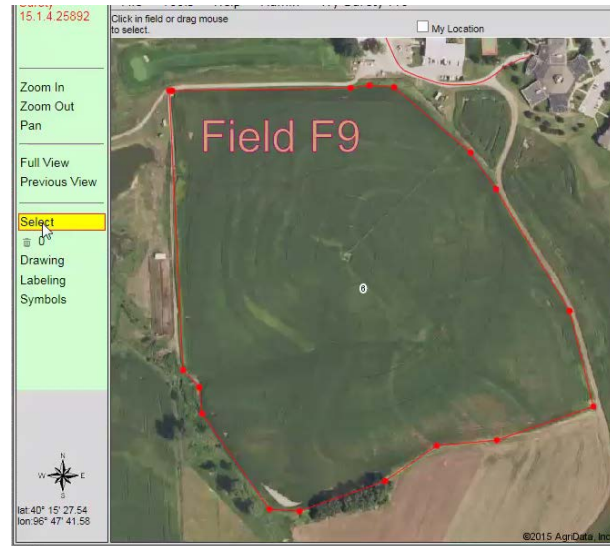


8. **Click** on the inside of text and drag the text to where you want it.



9. Since we have the labeling on; every time you click it will draw a new label. If you do not want that to happen each time; **select** the Select button.
10. Keep this map for the next tutorial.

Continue on next page. . .



Surety Maps - Symbols

View Instructor Video

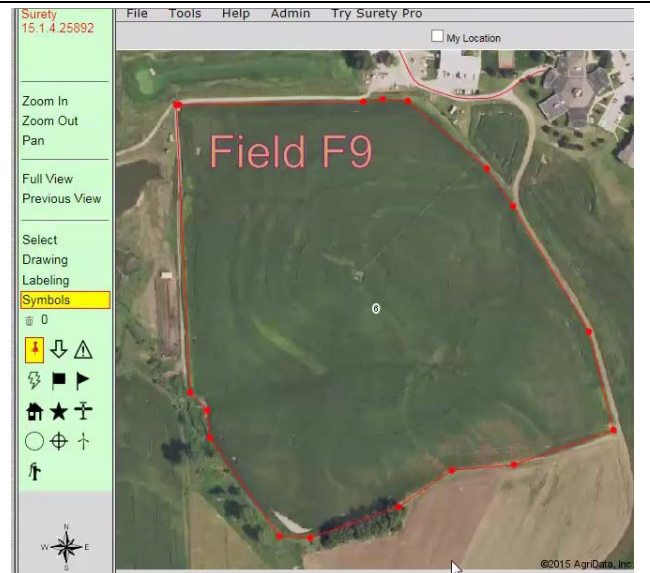
6 Surety Maps Symbols

Now we are going to add labels to our f9 map. The Symbols are used to pinpoint something important on the field.

Starting with the labeled f9 map:

1. **Select Symbols**

Note: There are a variety of symbols to choose from.

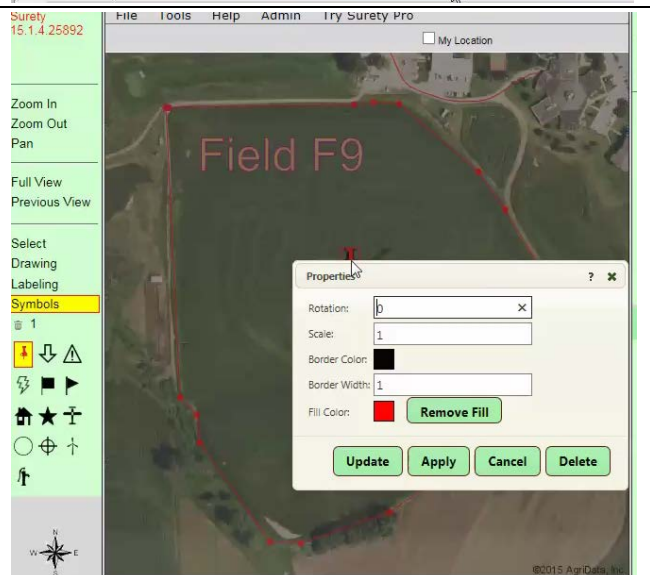


2. **Select the Thumbtack symbol** and place it on the map.

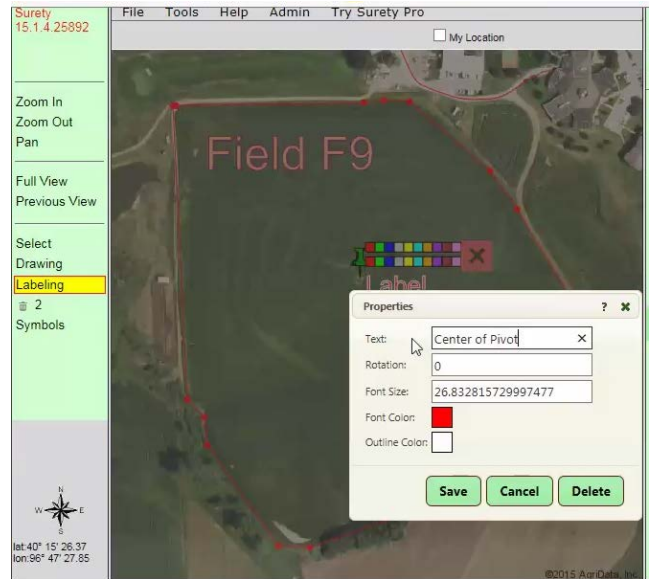
3. **Double click** on the *tack* to bring up the Properties box.

4. **Select a different color.**

5. **Select Apply.**



6. **Draw a label** to identify what the thumbtack represents (center of pivot)



End of tutorial on Surety Maps.