

M2 - T6 - Printing

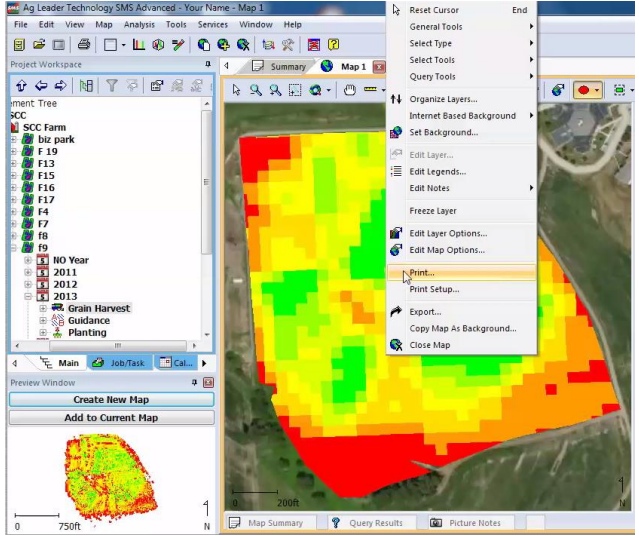
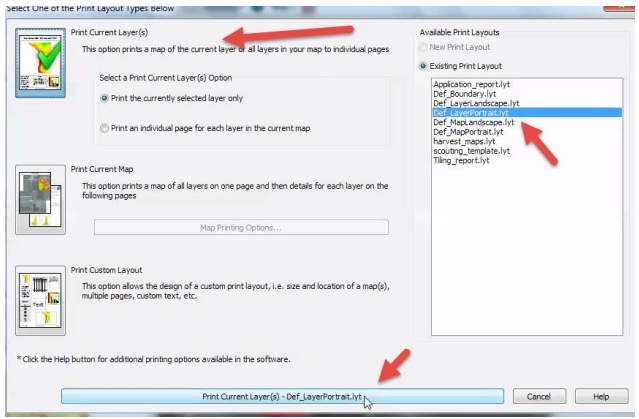
In this exercise students will learn about printing a map; printing to pdf; and creating custom maps for printing.

Instructions

- M2 - T6 Printing the maps

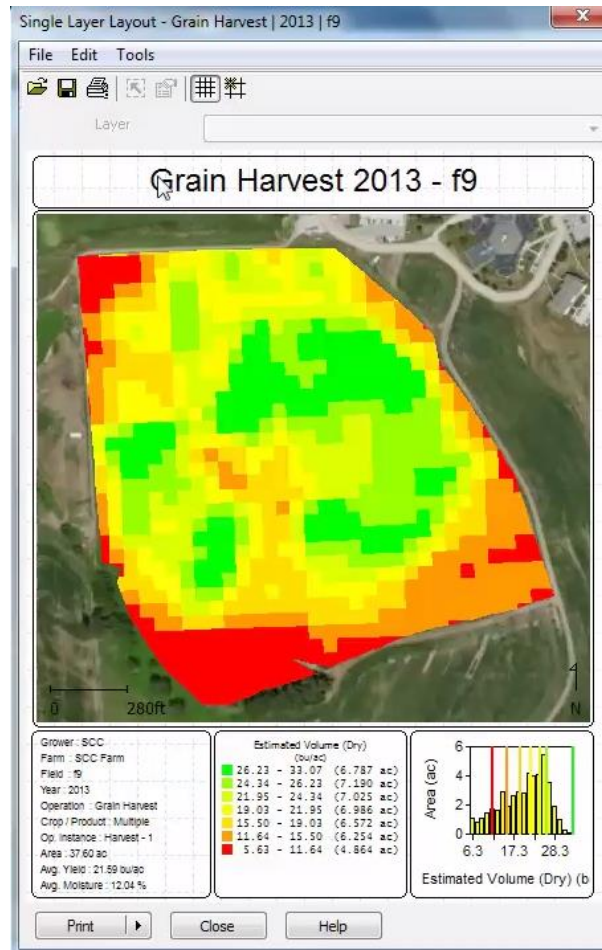
Activity

- Work through the tutorial on printing maps.
- Print the completed maps in pdf mode then post in the Assignment folder for this unit.

Instructions	Screenshots
<p>Basic Printing</p> <ol style="list-style-type: none"> 1. Open F9 2013. <p>As mentioned in the video there are two ways to print the maps.</p> <p>Select File - From here you can select <i>Print Map Layers, Print Map Summary, Print Map Results, Print Elevation Profile</i></p> <p>For this exercise we are going to:</p> <ol style="list-style-type: none"> 2. Right click on the map that you want to print and go to print. 	
<p>There are 3 options to review: Print Current Layer, Print Current Map, and Print Custom Layout.</p> <p>Print Current Layer</p> <ol style="list-style-type: none"> 1. Select Print Current Layer <p>This option allows you to print all the current layers in your map into individual pages. We can print a currently select layer only or you can print an individual page for each layer in the current map.</p>	

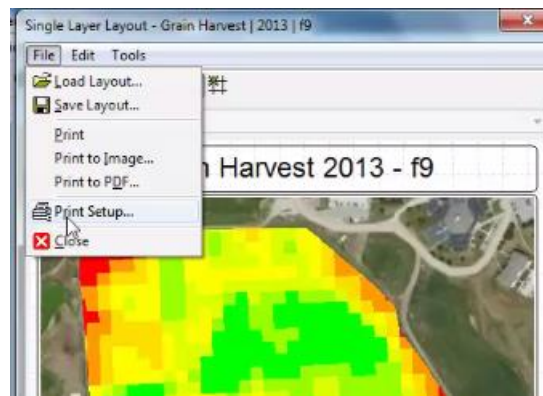
Note the existing print layouts on the right hand side.

2. **Select** *Def Layer Portrait.lyt*
3. **Select** *Print Current Layer - Def_Layer Portrait.lyt (at bottom)*; it's going to pop up and show you that this is Grain Harvest for 2013 F9; the map of your field; along with the Grower, Farm, Field, estimated volume dry and a graft.



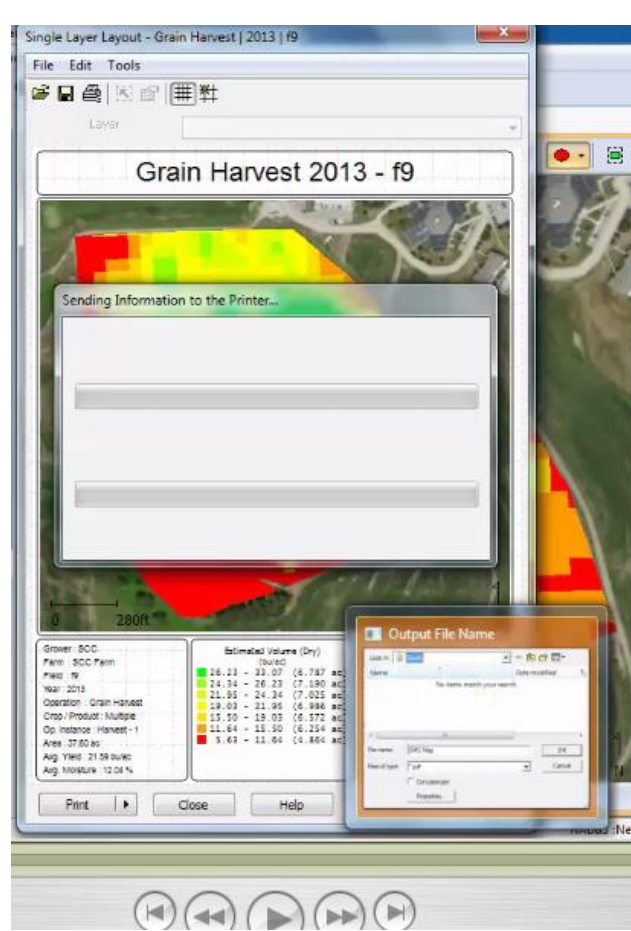
Next we will setup the printer. It's always going to default to SMS pdf printer. If you actually want to print a map at home; you are going to make sure that you select your current printer.

4. **Select** *File > Print Setup*
5. **Select** *PDF printer*
6. **Select** the *Print Button*



At this point; the pdf printer needs more information since it is NOT being sent to a real printer.

7. **Select** *Output File Name* down towards the bottom of the screen.



Next we will decide where to place the file so you can find it.

8. **Select** *Desktop* as the place where you want to store the file.
9. **Name** your file - *Your initial_F9 Map*
10. **Select** *Ok*
11. **Close out** of map

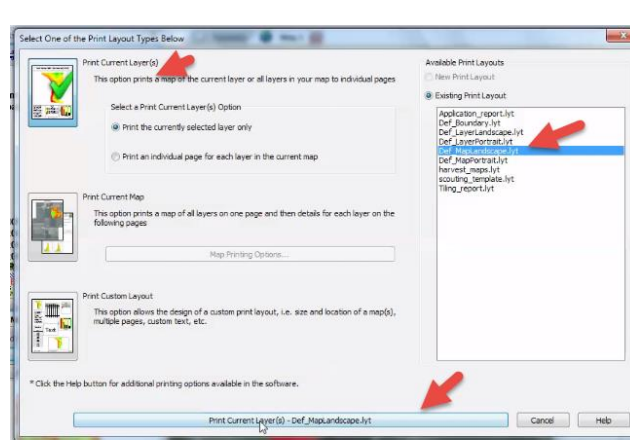


Go to the desktop to view the file. This file is ready to send to an insurance agent; banker, land owner and to submit for your assignments.



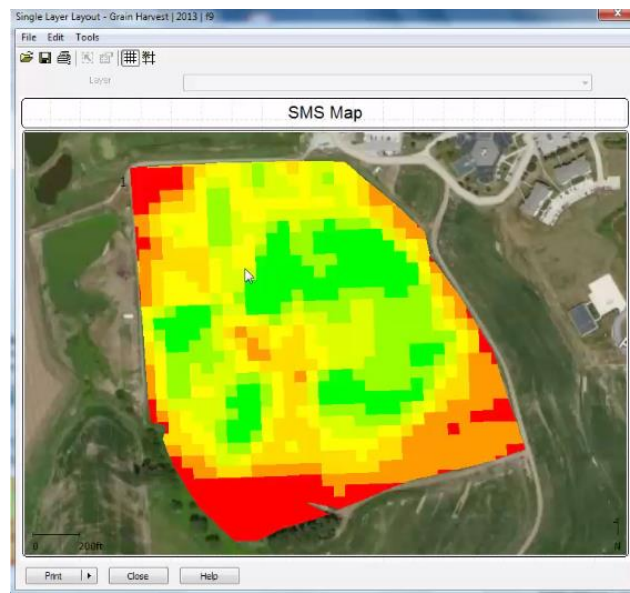
Not all views will have the same detailed information. View how the landscape looks.

12. **Right Click** on the map
13. **Select** *Print Current Layer*
14. **Select** *Landscape (instead of portrait)*
15. **Select** *Print Current Layer - Def_MapLandscape.lyt*



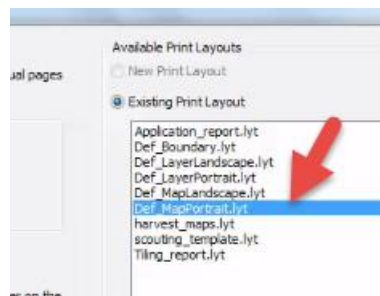
This selection will show you just that field. It's a different layout; it will not have the layer summary and other items as last time.

16. **Close out** of that *map*



Look at other options for printing.

17. **Repeat** opening of the map
18. **Select** *Def_MapPortrait.lyt* this time and view how the map will look.

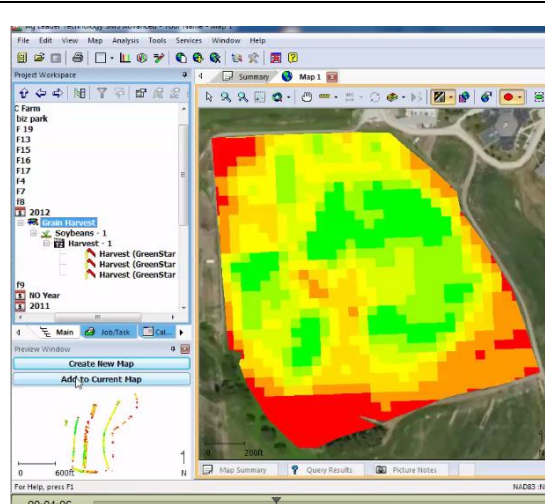


Print Current Map Option

This option prints a map of all layers on one page and then details for each layer on the following pages.

We will be adding the F8 Grain Harvest Data to the map.

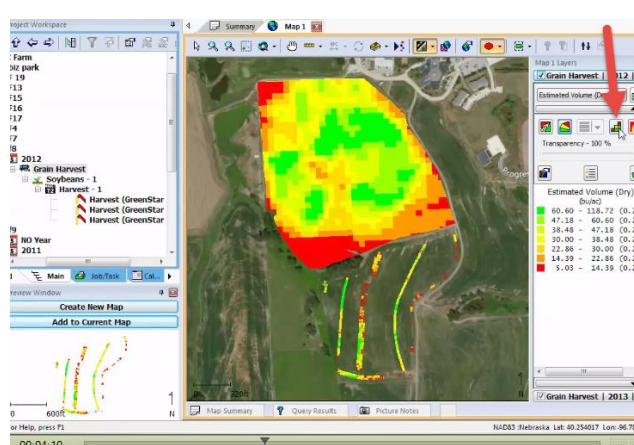
1. **Open** the *f9 map*
2. **Select** the *F8 Grain Harvest Data*
3. **Select** *Add to Current Map*



Next put the map into a Grid map.

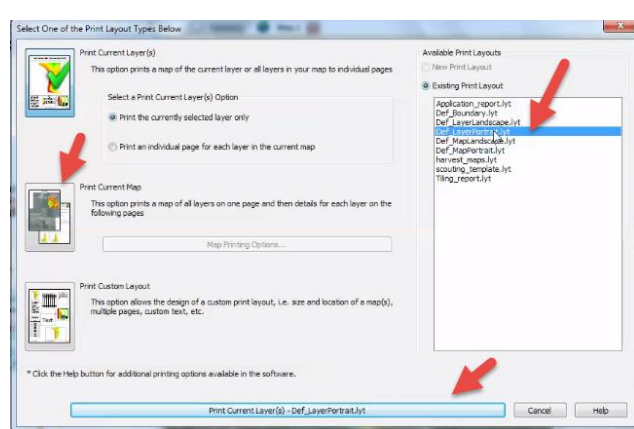
4. **Select** Grid Map icon

(This does not have very good data but we are going to go ahead and use this to show you how to do the next one.

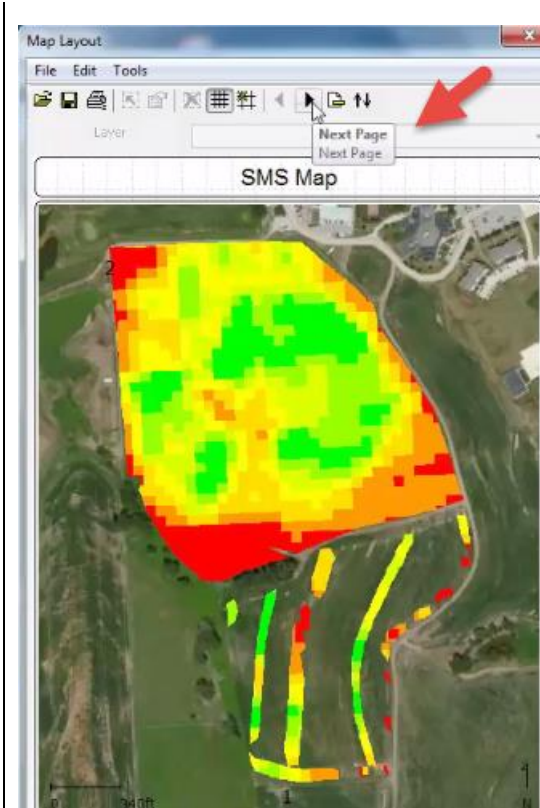


Print Current Map

1. **Right click** on map
2. **Select** *Print Current Map*
3. **Select** *Def_LayerPortrait.lyt* which will capture all the layers. It's going to put all the maps on one page and details on each one on the next pages.

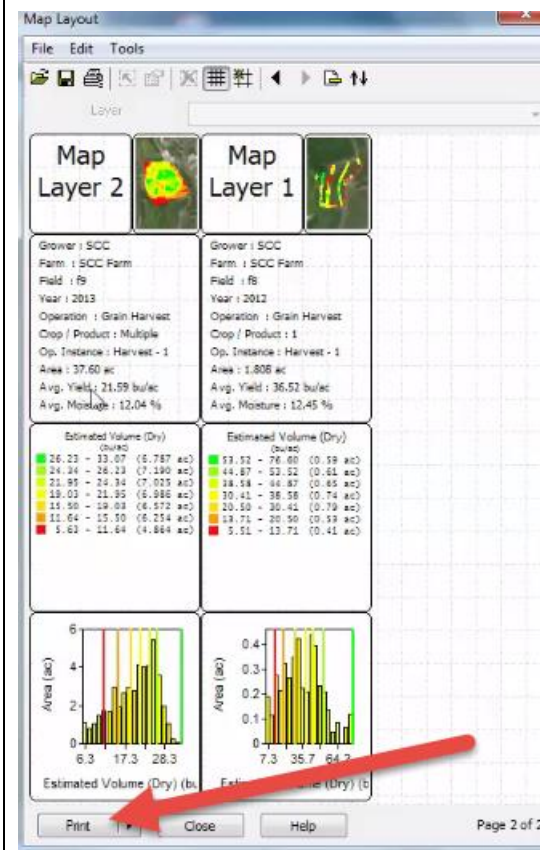


To view the other pages **Click on** the next arrow at the top.



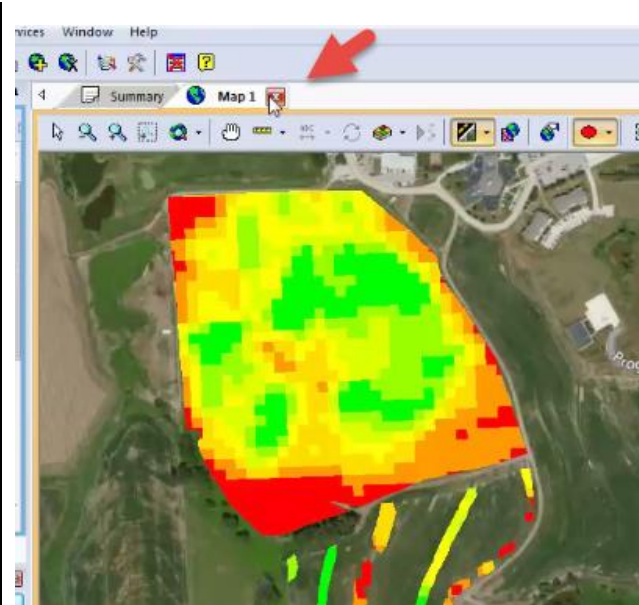
The next pages will have the Map Layer information.

4. Select the Print button
5. Save the pdf to the desktop as your initials_ F8 F9 Map.
6. Close out of the map layout.
7. Go to the Desktop to open the F8F9.pdf to view how the information is presented.
8. Close the pdf after viewing.



We are going to work with another map.

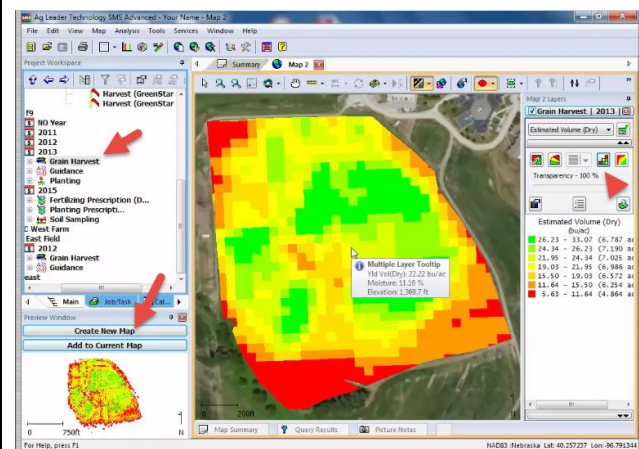
9. Go back to SMS.
10. Close your current map



Custom Layout Option

Now we are going to work with Custom Layout for your own farm. This allows you to make your own size; location of the map; multiple pages; custom text; etc.

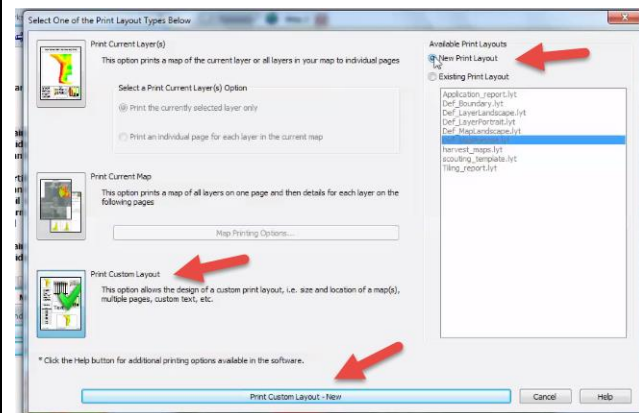
1. **Open your F9 map > 2013 Grain Harvest data.**
2. **Select *Create a new map***
3. **Select *Make it a grid map***



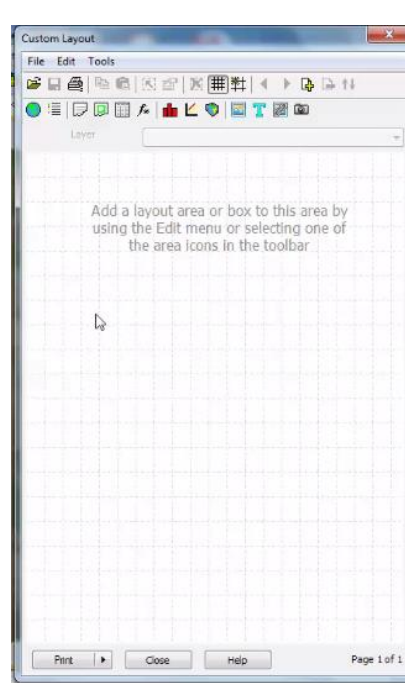
4. **Right click on map**
5. **Select *Print Custom Layout***

It's very important to use New Print Layout to clear the former layout we were working with.

6. **Select *New Print Layout***

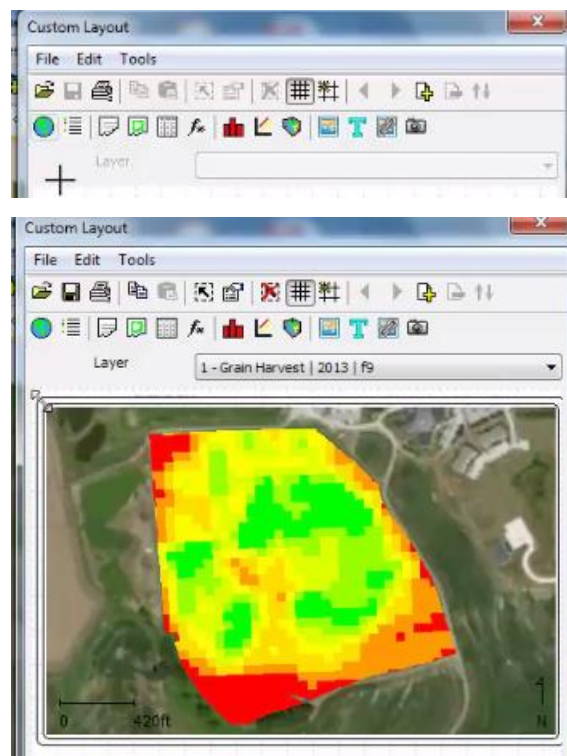


In this layout we basically have a blank canvas to work with. There are icons in the task bar at the top that will add the map, legends, text and allows us to custom design the map.



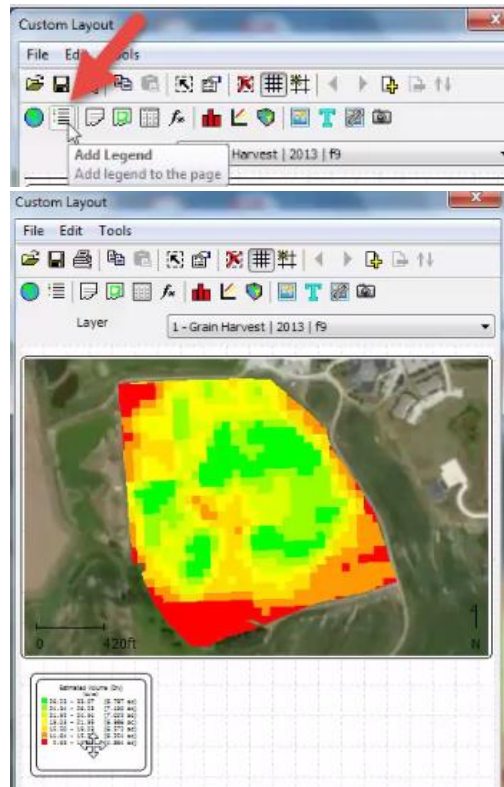
The first icon is a globe which is *Add a map*.

7. **Select Globe**
8. **Draw the map** by clicking and dragging the map to the size you want.
9. Once you add a map you can **resize it** by clicking on the edges and dragging into place.



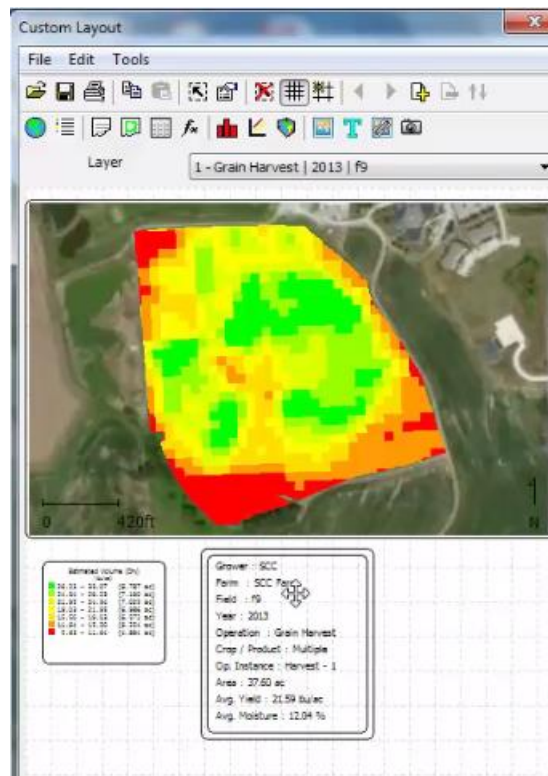
The next button to the right of the globe is *Add a Legend*. This will be the same legend (Estimated Volume Dry) as on the right side.

- 10. **Select** *Add a legend* to the map
- 11. **Draw** the legend (leave room for more items)



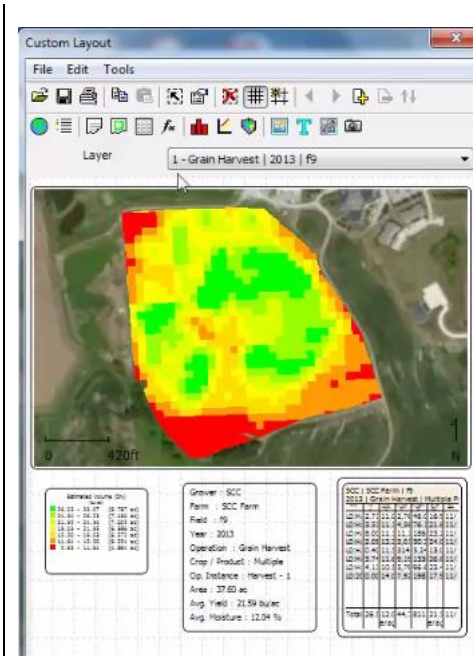
The next item on the task bar is *Layer Summary*. This will give you the SCC grower, farm, field, year of operation, your area average yield, and average moisture.

- 1. **Select** *Layer Summary* to the map
- 2. **Draw** the *Layer Summary* next to the Legend.



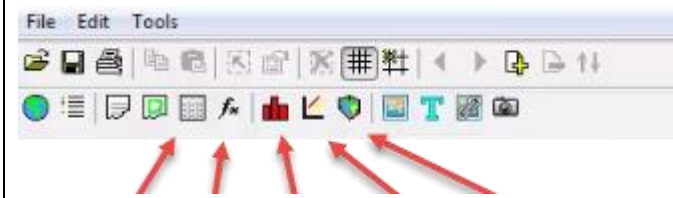
The next icon, *Field summary* will give you're the different loads per field.

1. **Select** *Field Summary* to the map
2. **Draw** the *Field Summary* next to the Layer Summary.



Review the icons Attribute, Analysis, Histogram, Chart, and Plot.

3. **Add** the various icons to view how they are represented.
4. **Choose one area** to add to your custom map.



Attribute, Analysis, Histogram, Chart, and Plot.

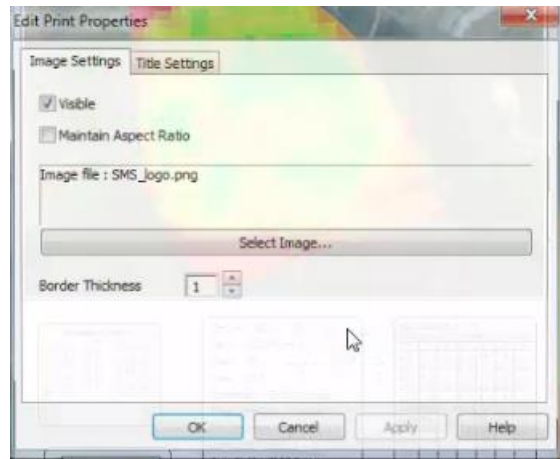
The next icon allows you to insert images. The default image will be SMS. If you have an image of your farm or business logo; that can be inserted here.

5. **Select** the *image icon*
6. **Draw** the *image* (it will be SMS)
7. **Right click** on the **SMS image** you placed
8. **Select** *Edit Properties*



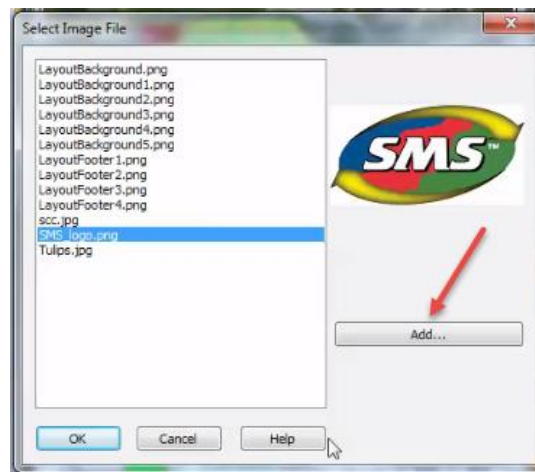
This is where you will search for an image.

9. **Click on *Select Image***



Use the Add button to find an image you stored on your computer.

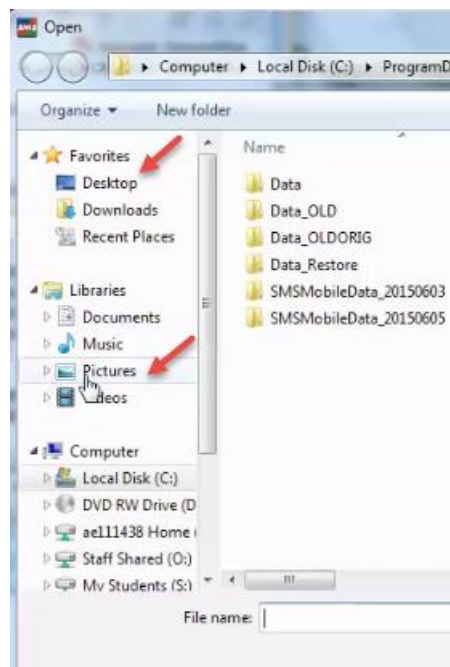
10. **Click on *Add***



The next screen will allow you to choose and image from your computer.

11. **Find the *SCC logo* on the desktop.**

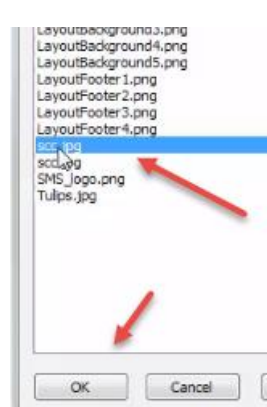
12. **Select the *Logo* and click on *Open*.**



Select the logo on the menu of left.

13. Click on *okay*

14. Click on *Apply* then *Ok*



Next we will add text to the *map*.

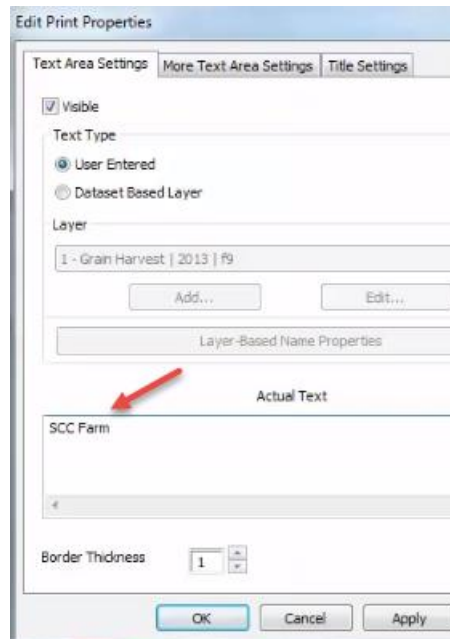
15. Select the *T icon*.

16. Draw a text box on the *map*

17. To Add text, double click on text box then **type** in *SCC Farm*

18. Click on *Apply*

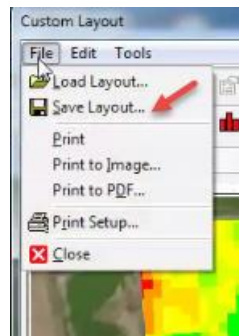
19. Click on *Ok*



In custom maps you can create a template so you don't have to recreate the layout each time.

20. Go to *File*

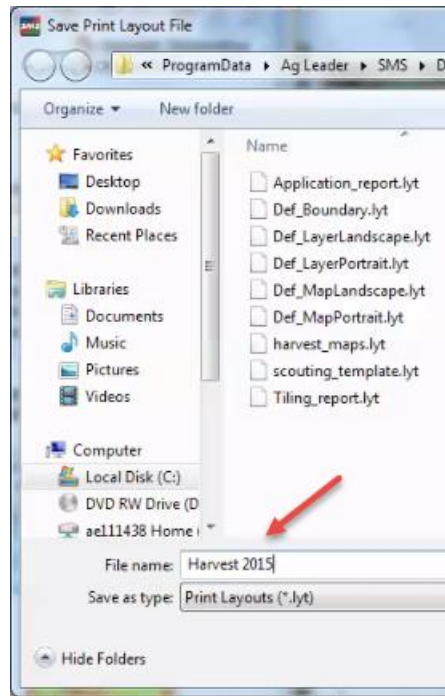
21. Select *Save Layout*



Name the file Harvest 2015

22. Click on Ok

23. Close out of the map



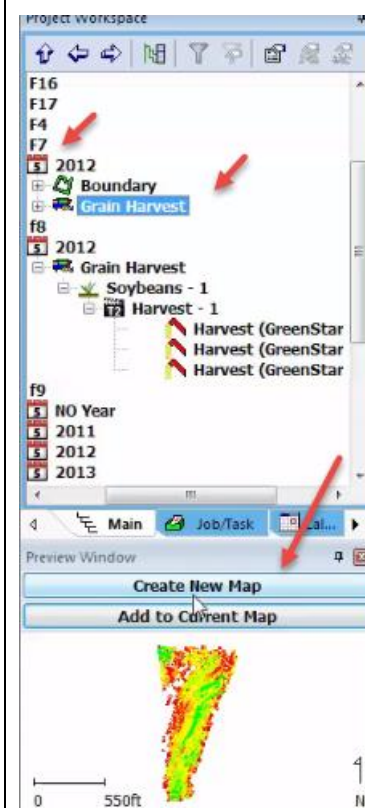
To check how the template works.

24. Open a new field

25. Open F7 Grain Harvest

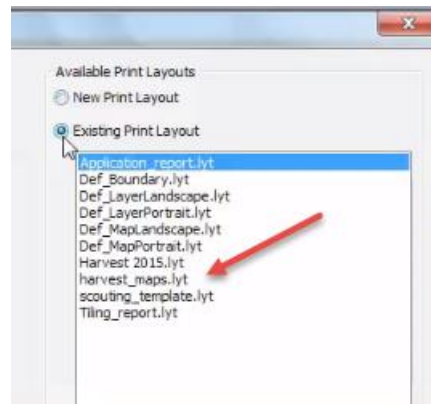
26. Select Create a new map

27. Right click on the map and go to Print



Choose an Existing Print Layout to automatically generate the map with your preferences.

- 28. **Select** *Existing Print Layout*
- 29. **Select** *Harvest maps*
- 30. **Select** *Print Custom Layout*



Upload the map to your Assignment in Moodle.