

SMS will be covering these units:**Topic 1** - SMS Getting Started**Topic 4** - Managing Data**Topic 2** - Reading in Files**Topic 5** - Freeze Fix Boundaries**Topic 3** - Understanding the Management Tree**M2 - T1 SMS Getting Started**

SMS is a desktop software from Ag Leader that has data collection and analysis capabilities that are used to make management decisions for Ag producers. Basically the data and resulting maps uncovers what your data is telling you about the factors influencing yield and decisions that have an impact to your operation.

SMS is used to collect accurate data throughout the year such as: field boundaries, planting, application and yield history. After collection, the data is read or logged into the SMS program for future analysis. The analysis is then used to analyze the major influencing factors on yield and other decisions that have an impact on your operation.

Students will learn the basics of starting a project, how to read files into SMS; how the management tree works, how to modify map settings and printing maps from farm data.

Instructions

- **Outline:** M2- T1 SMS Software
- **View Instructor Video:** Introduction to New Project

Activities

- M2- T1 Discussion
- Accessing the SMS Software
- View Instructor Video
- Complete activities in Tutorial Instructions
- Review how to access the Tutorials and videos from SMS

Students are expected to move through the steps of SMS training. First, open the step by step instructions; review the tutorial videos; then complete the tasks listed in the instructions. Post your completed map in the Moodle course management system (when requested). Not all activities will have a map to upload.

M2- T1 Discussion - Differences between Basic and Advanced SMS

After completing the readings: discuss the differences between Basic and Advanced SMS

Readings:

Click on this link to view the [Key Differences between SMS Basic and SMS Advanced](#).

Also review - [The Key functionality available only in SMS Advanced](#) to help you determine if SMS Basic is enough or if you need to move to SMS Advance for your operations.

This Discussion is worth 25 points.

Accessing the SMS Software

Click on the title: *Accessing the SMS software* to access the directions for loading VMware to your computer.

Students will need to access the software through a virtual desktop program call VMware. If you have not already done so follow the directions to get access to the program.

Tutorials and Videos for SMS Basic

Please review how to access the tutorials and videos for SMS Basic. They are an additional resource on SMS training.

Please review the tutorial video created by SMS then proceed through the lessons.

- [AgLeaderSMSTutorials](#) (for you reference) > [Review Introduction to SMS Desktop Software](#)

T3-1 SMS - Tutorial - Getting started in SMS

In this unit, students will learn the basics of starting an SMS project, how to read files into SMS; how the management tree works, along with editing and creating a map.

Readings and Resources

Instructor video - [Introduction new project video](#)

View the instructor video for this section. The instructions below are directly related to video.

Activities

- Creating a new project


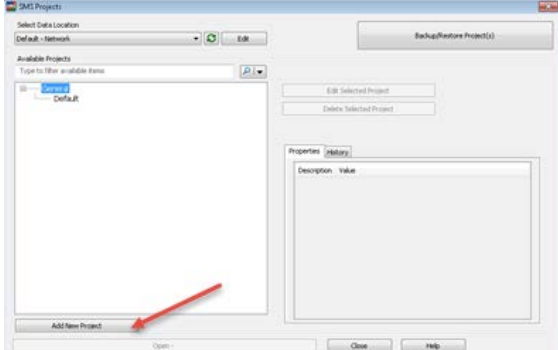
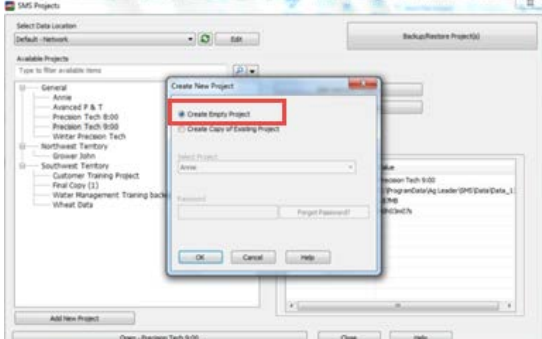
Students are expected to move through the steps of SMS training by reviewing the tutorial videos; accessing the SMS software to complete the tasks listed (on left side) then posting your completed map in the Moodle course management system (when requested). Not all activities will have a map to upload.

Creating a new project

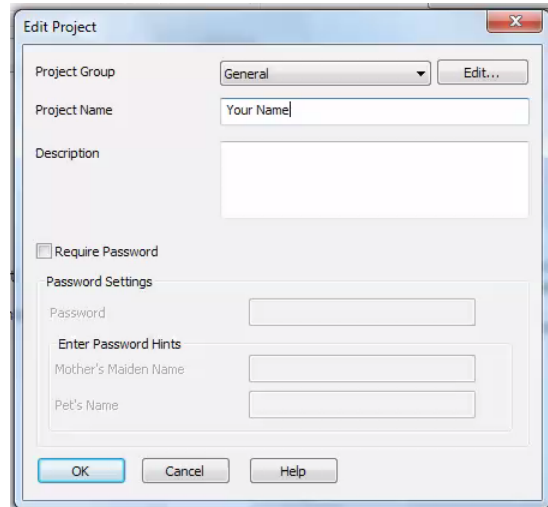
Projects are normally used to separate data from different users or customers that you want kept in different databases for security or data size reasons. When SMS opens it defaults to the projects window. If you have already created a project you can open that or Add a new project.

View: Introduction new project video

Activity: Add a new Project giving it the name *Online (Student Name)*

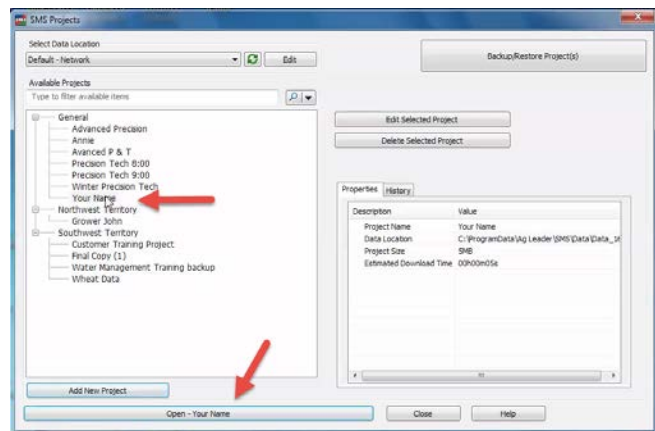
Instructions	Readings and Examples
<p>Once you have access to the remote server. . .</p> <p>The first thing you will do is click on the SMS Advanced. If this is the first time you are opening SMS Advanced it will take a few seconds to open and to get everything initialized for you.</p>	
<p>Once you open up in SMS you will select Projects and we are going to create a new project or add a new project.</p> <p>Select the button in the left lower hand corner to add new project.</p> <p>To add a Project</p> <ol style="list-style-type: none"> 1. Select Add New Project 	
<ol style="list-style-type: none"> 2. Select Create Empty Project 3. Click on Okay 	

4. **Enter** a project name: *Online Your name*
5. **Select** *Okay*



Underneath the General Category you should now see Your Name.

6. **Select** *Your name*
7. **Select** *Open Your Name*



Now you will see the general layout of SMS Advanced.

At the top left you will see you management tree.

At the bottom left you will see a preview window which will be previews of maps you create.

And on the right hand side is the general working area.

