

M2- T5 - Fix Boundaries

Now that we have learned how to merge and move fields we are going to start “fixing boundaries” on the map. Some maps may need to be cleaned up after using the Freeze Boundaries. The vertices (points) that make up the field boundary can be added, deleted, or moved. **Note:** Boundaries need to be *frozen* in order to *fix* a boundary

Reading/View

Instructor Video:

[Fixing Boundaries 1](#)

[Fixing Boundaries 2](#)

[Fixing Boundaries 3](#)

Activity:

Work through the tutorial- Fix the boundaries for F9

Complete M2-T5-1 Assignment

M2- T5-1 Assignment

After completion of the tutorial, please print to pdf a copy of the map you have created by selecting the title of the assignment and uploading the pdf.

This assignment is worth 50 points

Continue on next page. . .

Fix Boundaries

Now that we have learned how to merge and move fields we are going to start “fixing boundaries” on the map. Some maps may need to be cleaned up after using the Freeze Boundaries. The vertices (points) that make up the field boundary can be added, deleted, or moved. **Note:** Boundaries need to be frozen in order to *fix* a boundary

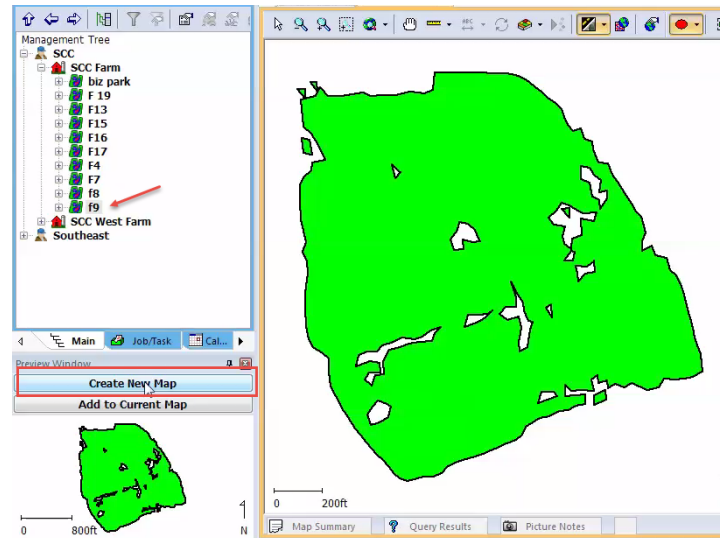
Video: Fixing Boundaries **Activity:** Fix the boundaries for F9

Instructions

Note the map has some flaws in it. There are places on the field that did not get mapped. This may be due to a sprayer mishap, wet land, or a combine got slugged when the boundaries were created. We want to go in and eliminate those flaws.

1. **Select F9**
2. **Select Create a new map**
3. **Right click** on the map on right to bring up the menu.

Screenshots



The editing layer allows us to fix the boundaries without having to go back in and redrawing them. Let’s say we eliminated some trees on the property and want to add that section back into the field.

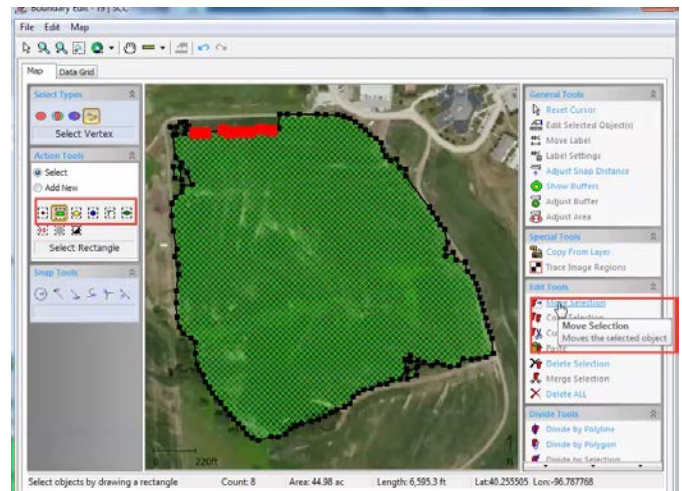
In the Boundary Edit box

4. **Right click and Select Edit Layer**
5. **Choose Select Vertex**
6. **Click on Select button**
7. **Select Points**
8. **Select the Vertex points** that you want to delete. (Use the rectangle to select)
9. **Click on Delete Selection.**
10. **Repeat** until the flaws have been deleted.

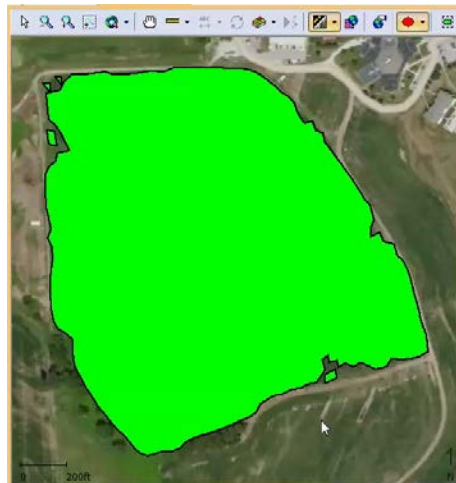


There was a sprayer mishap on the north end of the boundary area in F9. They actually killed some of the corn. We want to **move** the points up to include that part of the field in the boundary.

11. **Select** your *vertex points*
12. **Select** *Move Selection*
13. **Click and drag selection** to correct position.
14. **Clean up** any other vertex points.
15. **Select Save**
16. **Choose Okay** when it ask if you want to overwrite the existing save data.
17. **Close** the *Boundary Editing Window*



18. **Note:** the Boundary flaws are gone and the boundaries have changed.



Tutorial continued

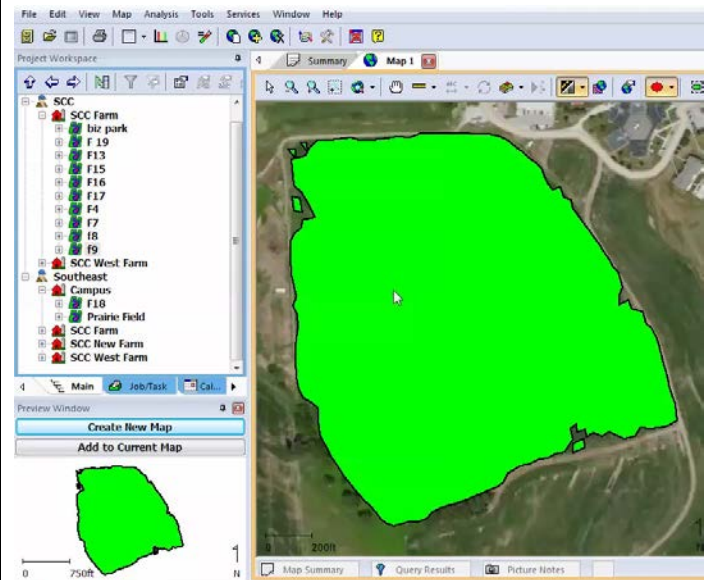
Instructions

Note the map has some flaws in it. There are places on the field that did not get mapped.

If you do not have a black line around your boundary that means your boundaries are not frozen.

19. **Click on the field (F9) name > right click > Select Freeze Boundary.** If the Freeze Boundary is grayed out this mean the boundary is already frozen.

Screenshots

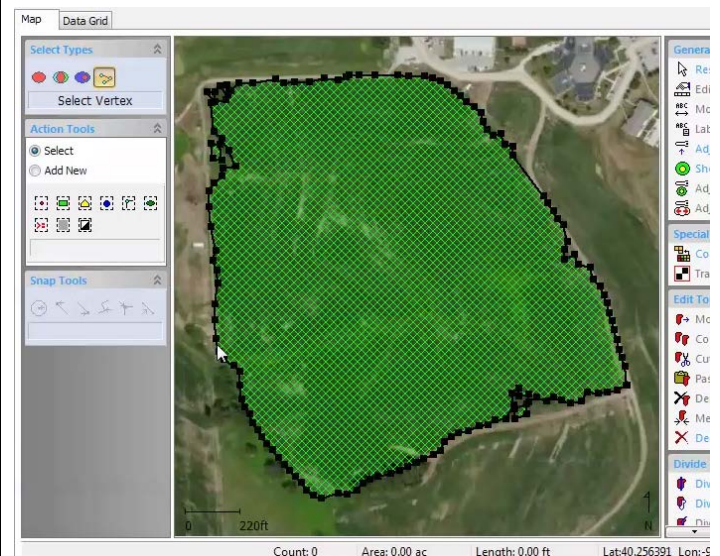


The editing layer allows us to fix the boundaries without having to go back in and redrawing them. Let's say we eliminated some trees on the property and want to add that section back into the field.

1. **Right click** on the map on right to bring up the menu.

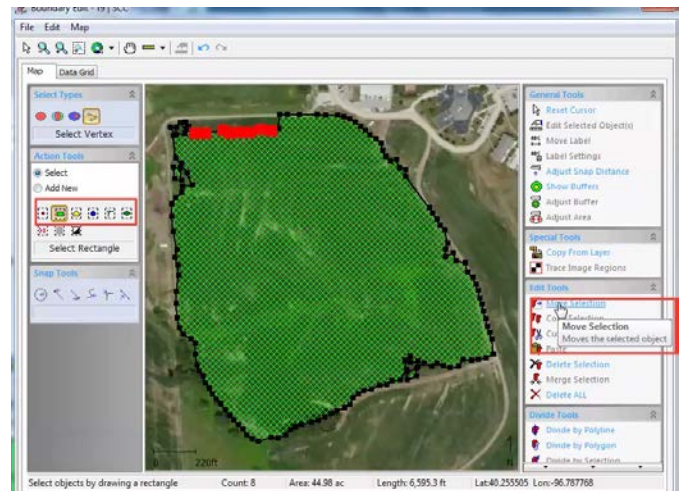
In the Boundary Edit box

2. **Select** Edit Layer
3. **Choose** *Select Vertex*
4. **Click on** *Select* button
5. **Select** *Points*
6. **Select** the *Vertex points* that you want to delete. (Use the rectangle to select)
7. **Click on** *Delete Selection*.
8. **Repeat** until the flaws have been deleted.

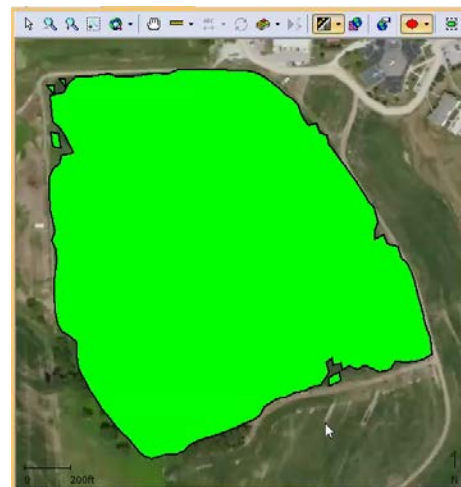


There was a sprayer mishap on the north end of the boundary area in F9. They actually killed some of the corn because they forgot to clean out the sprayer. We want to **move** the points up to include that part of the field in the boundary.

1. **Select** your *vertex points*
2. **Select** *Move Selection*
3. **Click and drag selection** to correct position.
4. **Clean up** any other vertex points.
5. **Select** *Save*
6. **Click** on *Okay* when asked if you want to overwrite the saved dataset.
7. **Close** the *Boundary Editing Window*



Note: the Boundary flaws are gone and the boundaries have changed.



Continue on next page. . .

Deleting a Boundary and Drawing a New Boundary

Now we are going to view how to delete a boundary and draw a new boundary.

Video: Fixing Boundaries

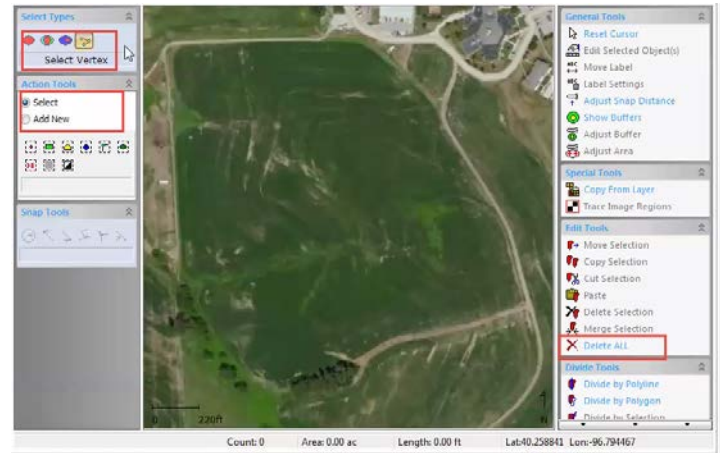
Activity: Deleting and drawing new boundaries for F9

Instructions

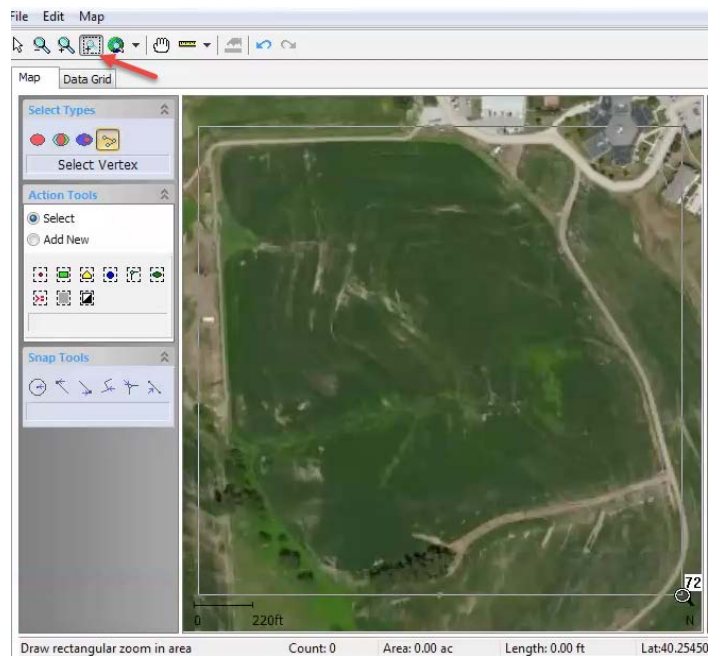
Working with the revised boundary map:

8. **Right click** on the map, **click on *Edit Layer***
9. Using the rectangle tool **select all the Vertexes**.
10. **Select *Delete All*** to erase the entire boundary.

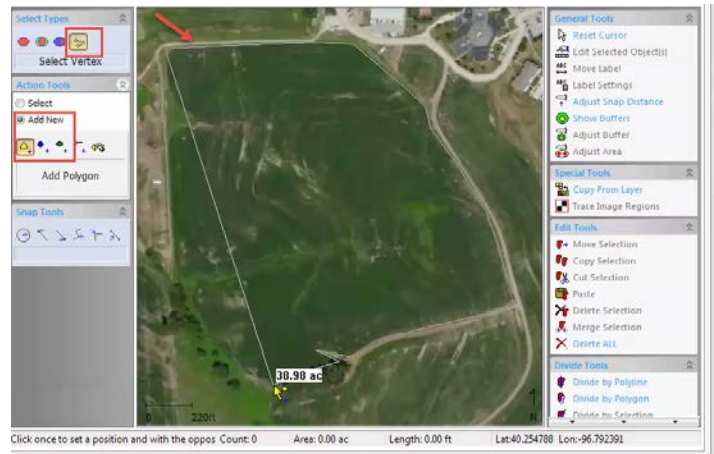
Screenshots



11. **Choose *Zoom to box*** to get the image as large as you can to draw the new boundaries.



12. **Reset** the cursor to the arrow tool
13. **Select** *Add New* in the Action Tools
14. **Select** the *Add polygon* tool
15. **Draw** a *boundary* around the field avoiding non-plantable areas.
16. **Click on Save**



Printing the map

Instructions

With map open in the mapping window; **click** on the printing icon on the main tool bar.

The print layout dialogue box will now open with 3 options for printing maps.

- Print current Layer
- Print current map
- Print custom layout

To print this map click on the print button at the lower left hand corner.

1. **Select** Print to pdf, save as to your N drive.

Screenshots

All 3 selections will allow you to customize the maps you are printing.

- **Select** print current layer
- **Select** the print current layer button at the bottom of the box.

The next window will be a preview of what will be printed out. There is a title bar, the map, a legend, a summary, and a histogram of the data.

There are 3 options:

- **Print** to your local printer;
- **Print** to Image to save the image to your computer;
- **Print** to pdf which allows you to send the data in emails or print at a later date.

In addition to creating maps in SMS you have the option of Creating and printing reports in a text only representation of the data. Select new general report.

Save your work

Click: Save As on the *Quick Access Toolbar*, or press Ctrl+S as you complete each step.



Upload the completed map to M2 - T5 - Fix Boundaries

1. **Click: File > Save**

After completion save the file one more time and upload the file to this assignment:

2. **Click:** on the *title*
3. **Select:** *Add Submission*
4. **Drag and drop** the *file* into the box, or **select** the *file* to upload

Select: *Save Changes*

