

Introduction to Computers



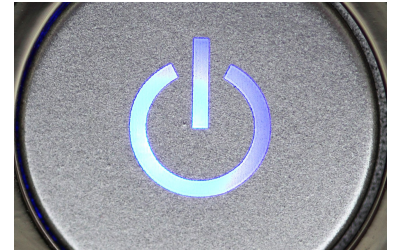
This project is sponsored by a \$15.9 million grant from the U.S. Department of Labor, Employment and Training Administration.

The AMMQC program is an Equal Opportunity program. Adaptive equipment is available upon request for individuals with disabilities. This workforce product was funded by a grant awarded by the U.S. Department of Labor's Employment and Training Administration. The product was created by the grantee and does not necessarily reflect the official position of the U.S. Department of Labor. The U.S. Department of Labor makes no guarantees, warranties, or assurances of any kind, express or implied, with respect to such information, including any information on linked sites and including, but not limited to, accuracy of the information or its completeness, timeliness, usefulness, adequacy, continued availability, or ownership.

This work is licensed under a Creative Commons Attribution 3.0 Unported License [\[http://creativecommons.org/licenses/by/3.0\]](http://creativecommons.org/licenses/by/3.0)

Power BuQons (1 of 3)

- Size and location varies, but all buQons to power devices on have an icon with an unclosed circle and a vertical line.

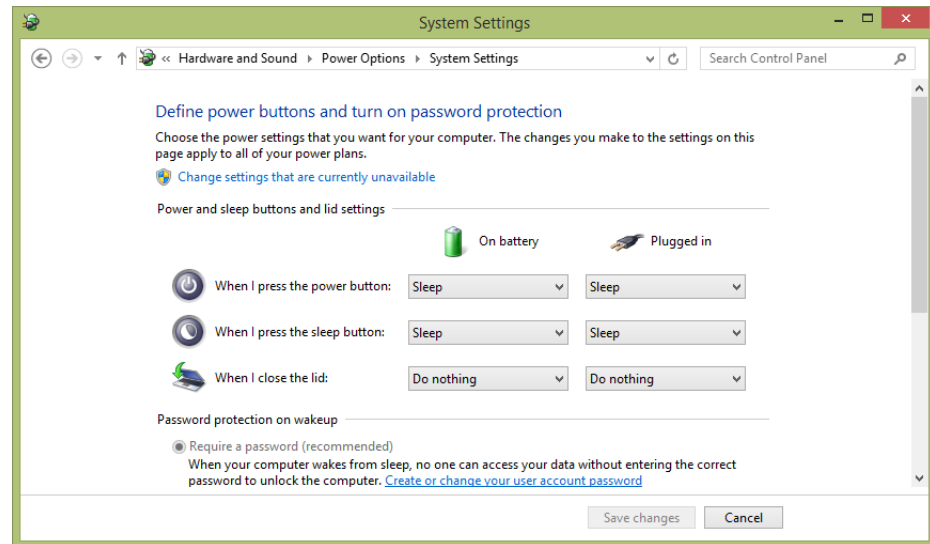
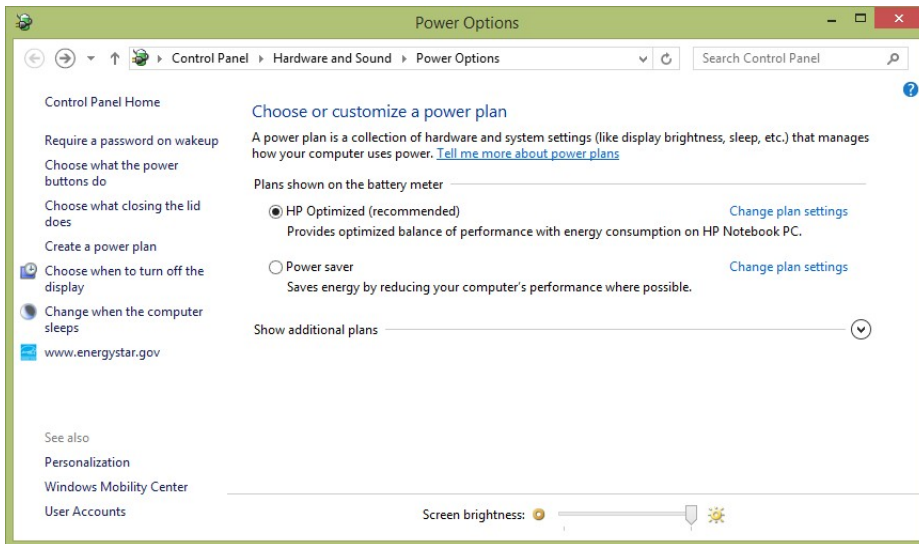


Power Buttons (2 of 3)

- A computer system may have multiple power buttons, one for the computer itself and another for the monitor, and more for peripherals.
- Users can control what happens when the power button is pressed.

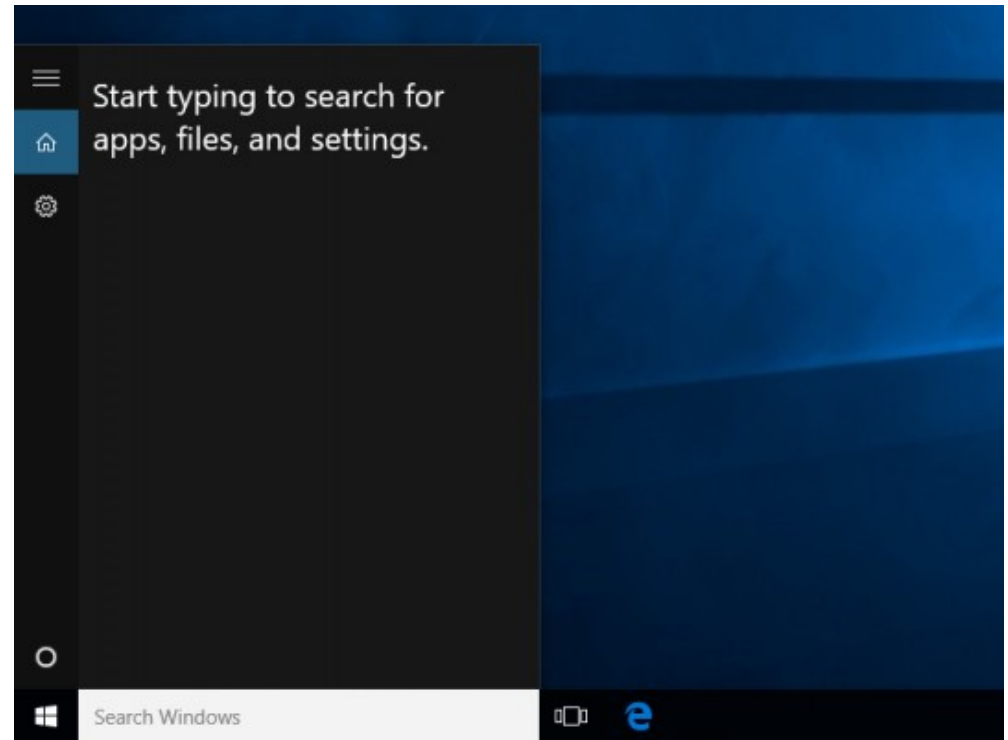
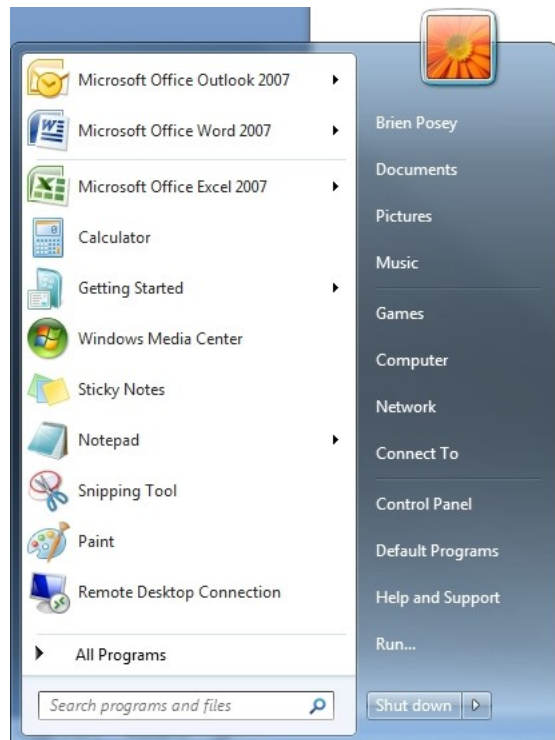
Power Buttons (3 of 3)

- search “Power Options”



Finding Programs

- As systems have become more complicated, users have begun “searching” rather than “browsing.”



Finding and Saving Files

- Windows Explorer shows drives, folder, and files
- Save as... to change local on or name of a file

