

## PLC210 Lab Exercise 15: Searching in RSLogix5000

Download the project Compact\_Module\_7\_search\_doc.ACD, go Online and put the CompactLogix into the Run mode to do the following lab.

The I/O tag names in this lab may need to be changed to match the addresses on your hardware trainer.

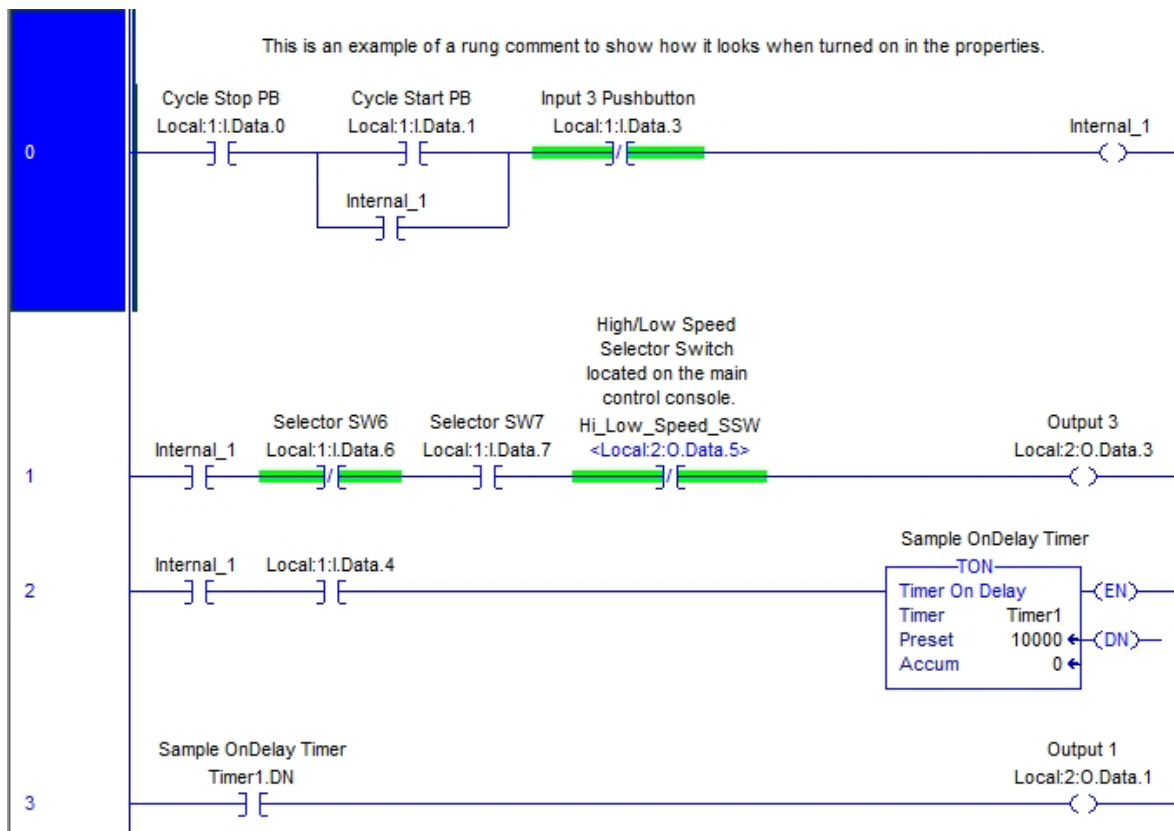


Figure 1-A. The ladder logic of the search routine.

Note: For CompactLogix processors – Searching can be accomplished either online or offline.

Search and Replace can only be performed offline

## Open the MainRoutine

### 1. Search for Tags using Search -> Find

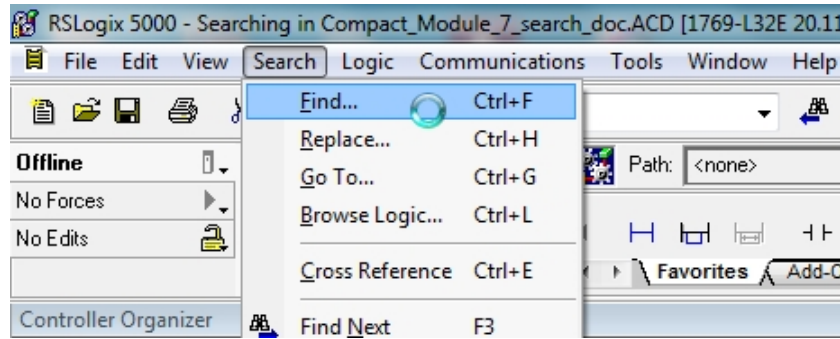


Figure 2-A. Choosing the Find option.

On the Menu Bar of the RSLogix 5000 application, select Search -> Find

The Find in Routines window opens

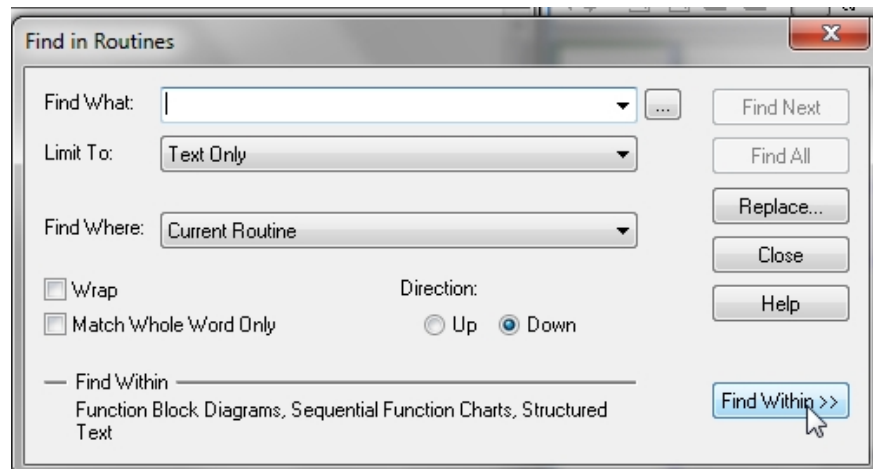


Figure 3-A. Click the Find Within.

Click the Find Within>> button to configure Search criteria.

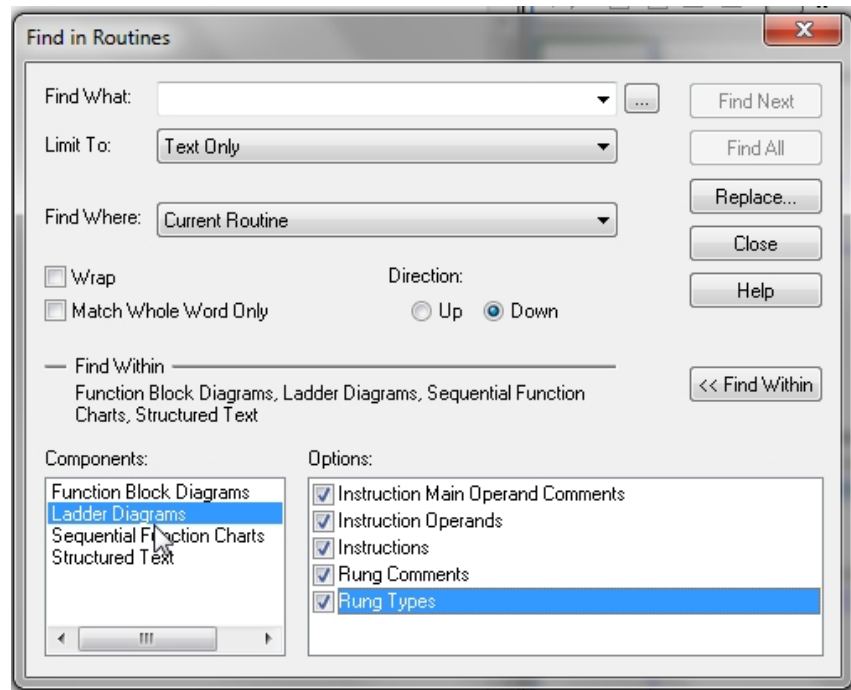


Figure 4-A. The Find in Routines option.

In the Components box – select Ladder Diagrams

In the Options box ensure all the boxes are checked.

Note: Options filters specific searches

Click the << Find Within button to close Components and Option boxes

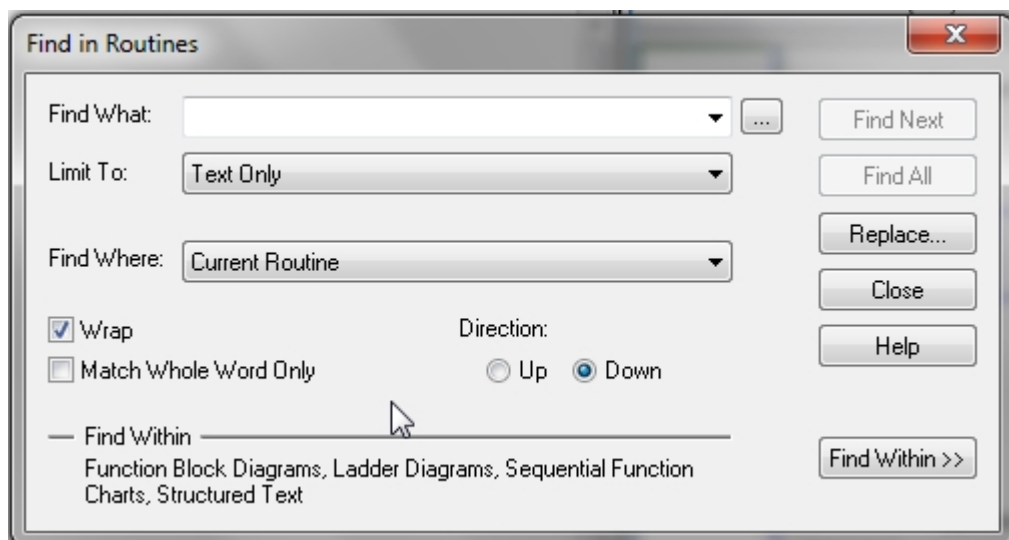


Figure 5-A. Parameter for finding objects.

Ensure Wrap box is checked

Direction: Down

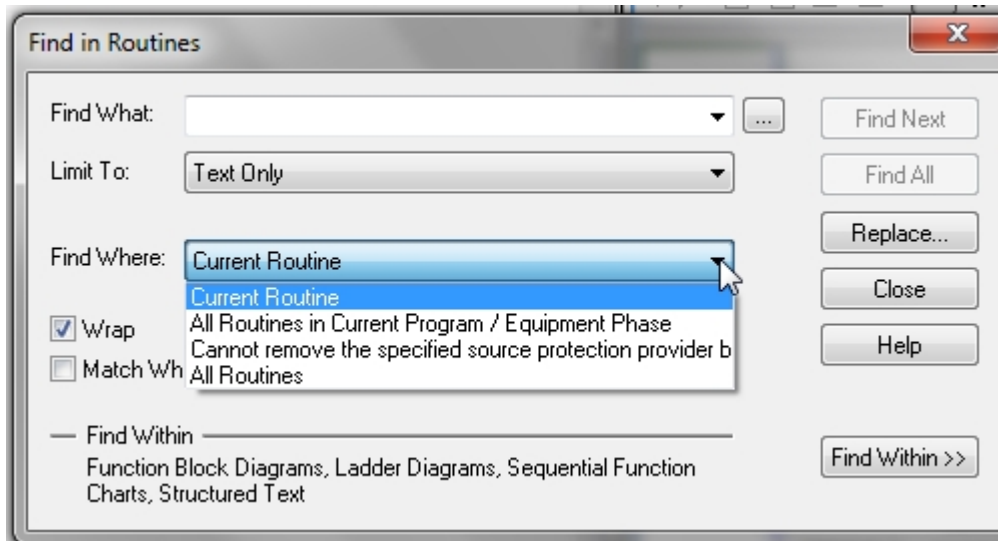


Figure 6-A. Choosing to search in current routine.

In the Find Where selection box choose Current Routine

Note: Current Routine is the routine shown in the right-side window of the RSLogix 5000 software.

Click the button to the right of the Find What: selection box

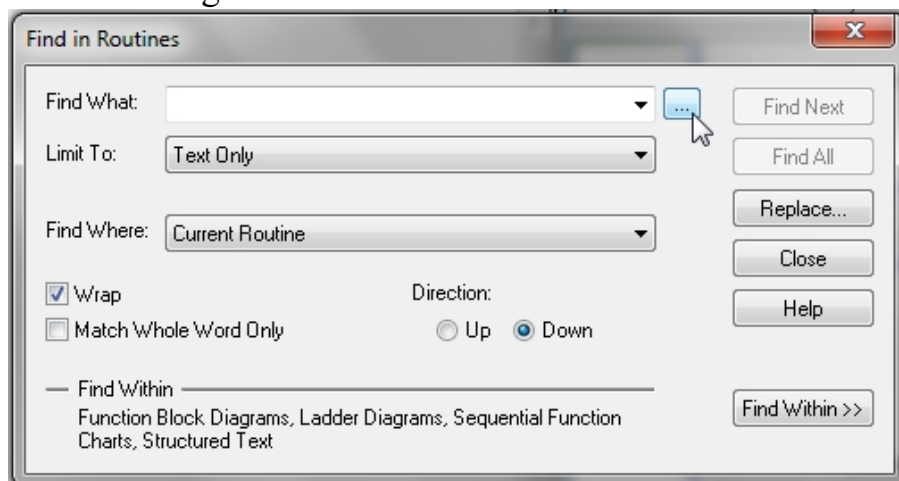


Figure 7-A. The lookup find what option.

The Search Item Browser window opens  
This window shows project Tags.  
Select the Alarm Timer tag.

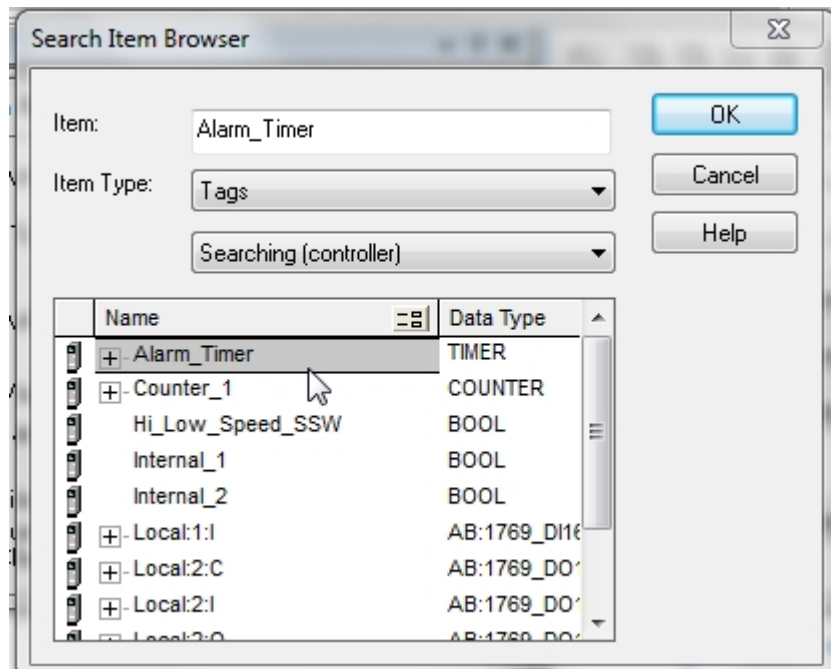


Figure 8-A. Choosing a tag to find.

Click the OK button

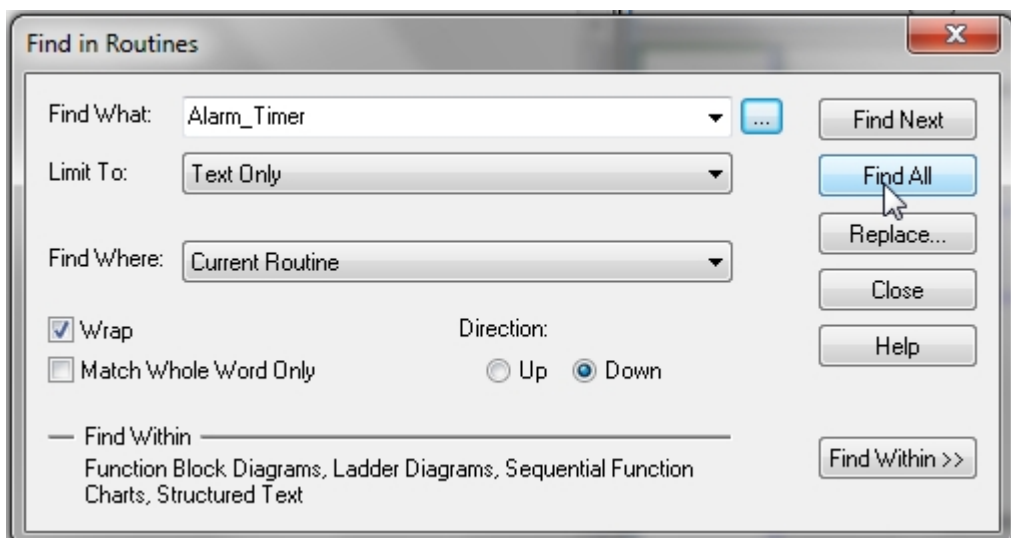


Figure 9-A. Find all instances of the tag.

The tag selected in the Search Item Browser windows appears in the Find What: selection box

Note: A tag name could be directly type in the Find What: selection box.

Click the Find All button

A Search Results window opens at the bottom of the Ladder screen.

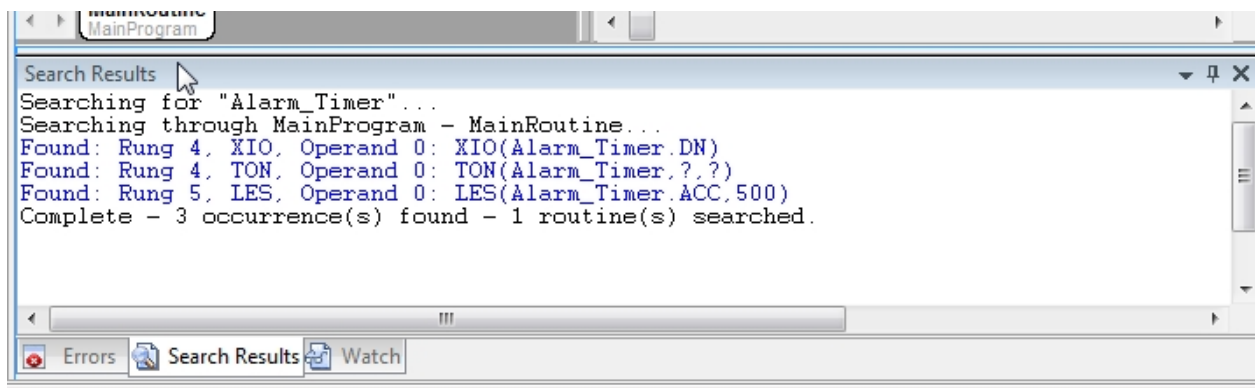


Figure 10-A. The search results window.

The lines in blue are the occurrences of the selected tag.

Ensure MainRoutine window is opened.

Return to the Search -> Find on Menu Bar to open the Find in Routines window

Search for the tag Timer1

List the occurrences of the Timer1 tag

---

---

Open the Speed Control routine

Return to the Search -> Find on Menu Bar to open the Find in Routines window

Search for the tag Timer1  
List the occurrences of the Timer1 tag

---



---

Explain: \_\_\_\_\_  
 \_\_\_\_\_  
 \_\_\_\_\_

2. Search for Tags using Quick Search / Generic Search Box

The Quick Search / Generic Search Box is located in the Standard Toolbar.

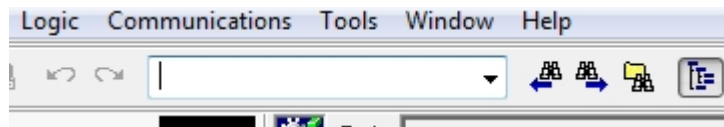
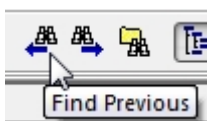
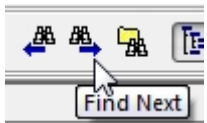


Figure 11-A. The quick search box.

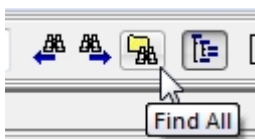
Three icons associated with the Quick Search / Generic Search Box are:



Steps up the Ladder routine to find an occurrence



Steps down the Ladder routine to find an occurrence



Finds all the occurrences – opens Search Result window

Figure 12-A

Open MainRoutine

Type in the tag name of Internal\_1 in the Quick Search box.



Figure 13-A. Typing in a tag in the quick search box.

Click the Find All icon

The Find in Routines window opens with the tag Internal\_1 listed in the Find What: selection box

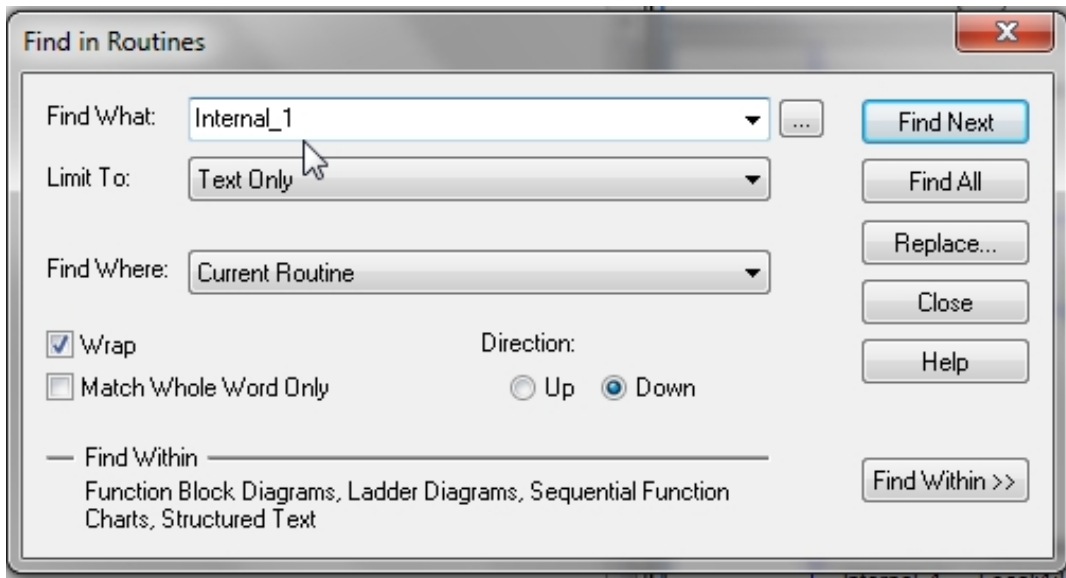


Figure 14-A. Searching to find the next instance.

Click the Find All button.

List the occurrences of the Timer1 tag

---

---

---

---



3. Search for Tags using Cross Reference

Open MainRoutine

Right mouse click on the timer tag Timer1 on Rung 2.

From the selection menu – choose

Go To Cross Reference For “Timer1”

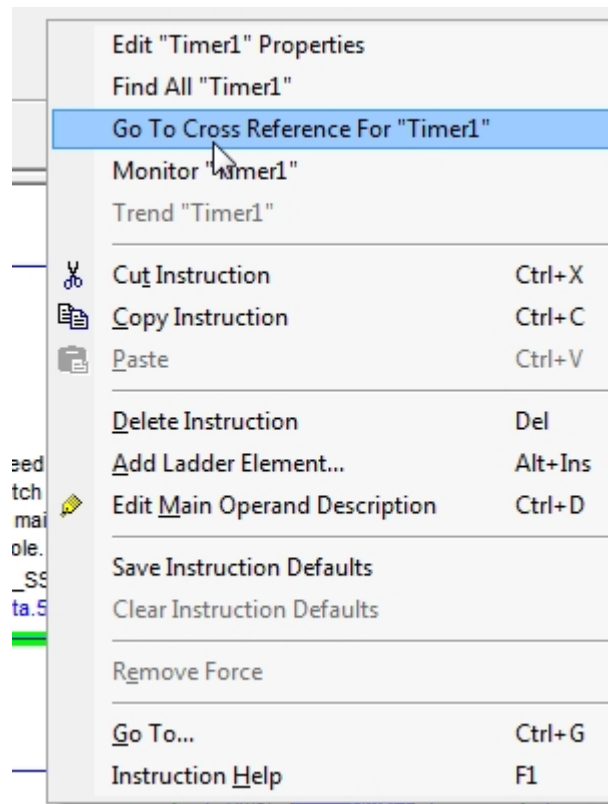


Figure 15-A. Search cross reference.

Click Cross Reference For “Timer1”

Element	Container	Routine	Location	Reference	BaseTag	Destructi
TON	MainProgram	MainRoutine	Rung 2	Timer1		Y
XIC	MainProgram	MainRoutine	Rung 3	Timer1.DN		N

Figure 16-A. The cross reference search results.

The Cross reference window lists the occurrences of the selected tag - Timer1

Open the MainRoutine

At Rung 4 – Cross Reference the tag Local:1:I.Data.5

List Element - Routine - Location information for Local:1:I.Data.5

---



---



---



---

4. Search for Tags using Find All

Note: Find All is similar to using Cross Reference

Open MainRoutine

Right mouse click on the timer tag Timer1 on Rung 2.

From the selection menu – choose

Find All “Timer1”

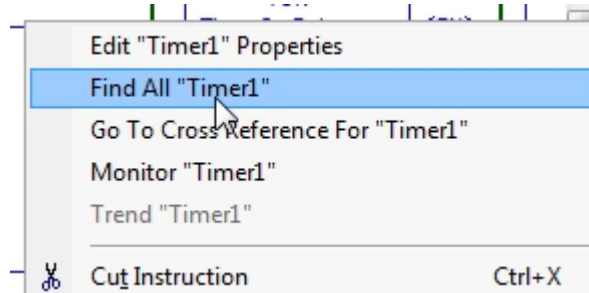


Figure 17-A. Right click on a tag and Find All.

Click Find All “Timer1”

A Search Result window opens at the bottom of the Ladder window that shows the occurrences of Timer1

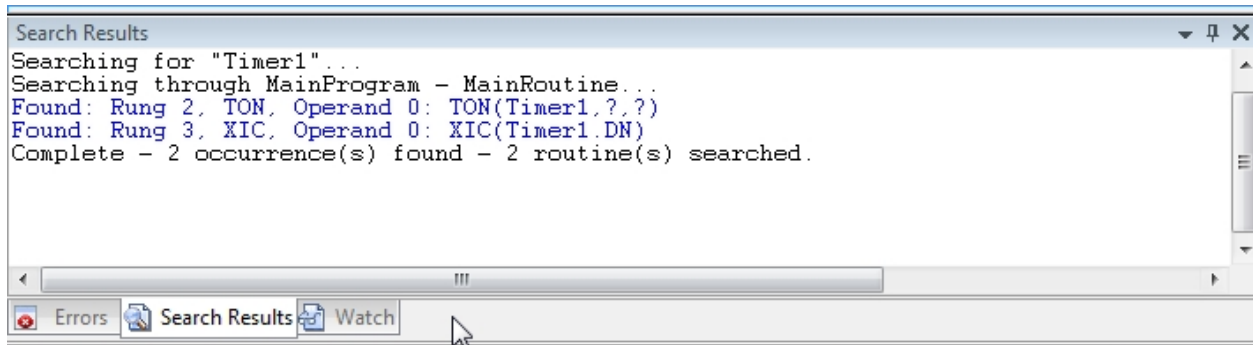


Figure 18-A. The Find All search results.

Open the MainRoutine

At Rung 0 – use Find All for tag Local:1:I.Data.3

List Instruction type – Routine location - Rung number information for the occurrences of Local:1:I.Data.5

---



---



---



---

Open the Find in Routines window using Search -> Find  
Ensure MainRoutine is opened in Ladder window

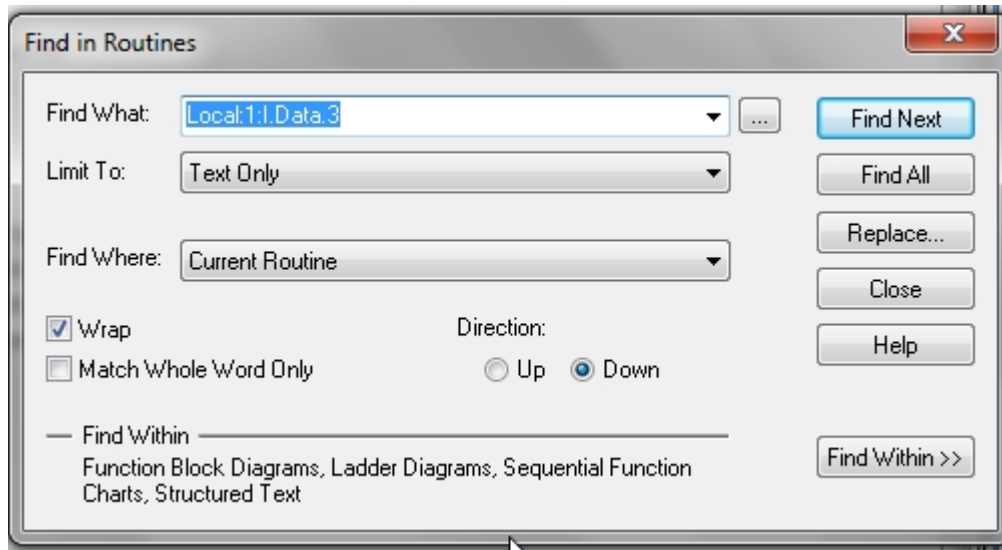


Figure 19-A. Finding an input in a routine.

Configure the Find in Routines window as shown

Click the Find All button

List Instruction type – Routine location - Rung number information for the occurrences of Local:1:I.Data.5

---



---



---



---

Are the results the same as with using Find All method? \_\_\_\_\_

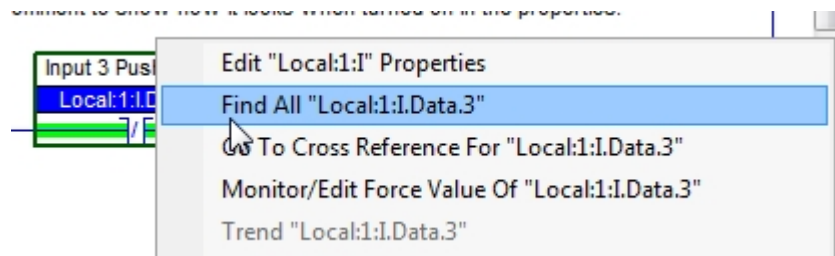


Figure 20-A. Performing a Find All on a tag.

Explain: \_\_\_\_\_  
\_\_\_\_\_  
\_\_\_\_\_

5. Search for documentation using Search -> Find

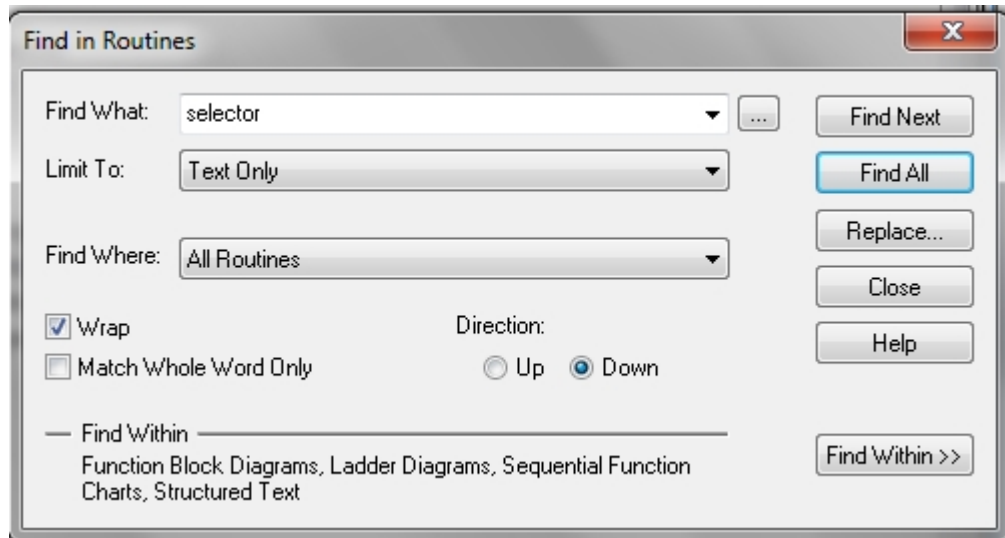


Figure 21-A. Searching for words in the documentation.

Configure the Find in Routine window as shown.

Click the Find All button.

List Instruction type – Routine location - Rung number – full comment information for the occurrences of - selector

\_\_\_\_\_  
\_\_\_\_\_  
\_\_\_\_\_  
\_\_\_\_\_  
\_\_\_\_\_  
\_\_\_\_\_  
\_\_\_\_\_

6. Search for documentation using Quick Search / Generic Search Box



Figure 22-A. Searching for words in Quick Search.

Type the word –cycle- into to the Quick Search / Generic Search Box

Click the Find All icon

List Instruction type – Routine location - Rung number – full comment information for the occurrences of - cycle

---



---



---

7. Search for type of instructions using Search -> Find

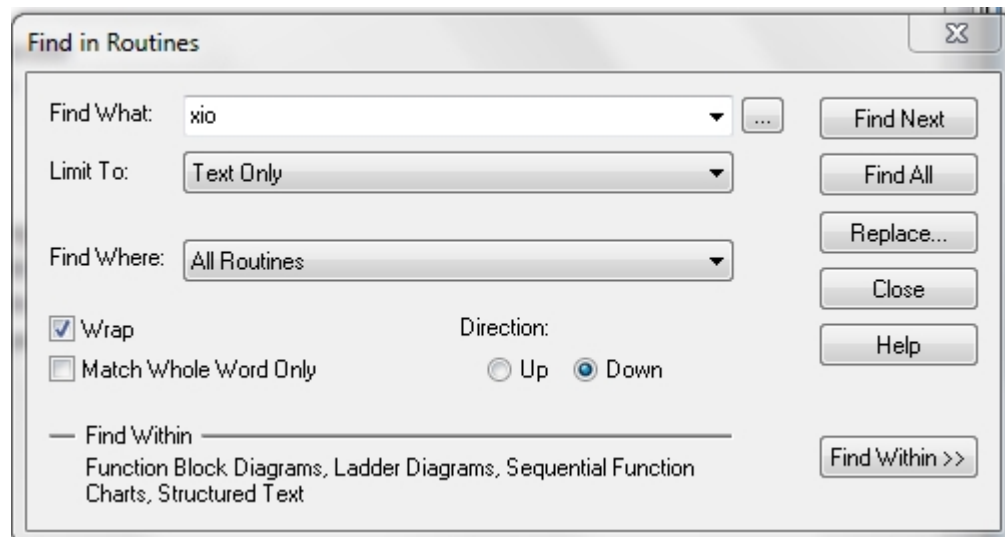


Figure 23-A. Searching for a type of instruction.

Configure the Find in Routine window as shown.

Click the Find All button.

List Instruction type – Routine location - Rung number – tag information for the occurrences of - xio

---



---



---



---



---



---



---

Note: The Quick Search / Generic Search Box can also be used to search for instruction types

8. Search for type of instructions and tags using Search -> Find

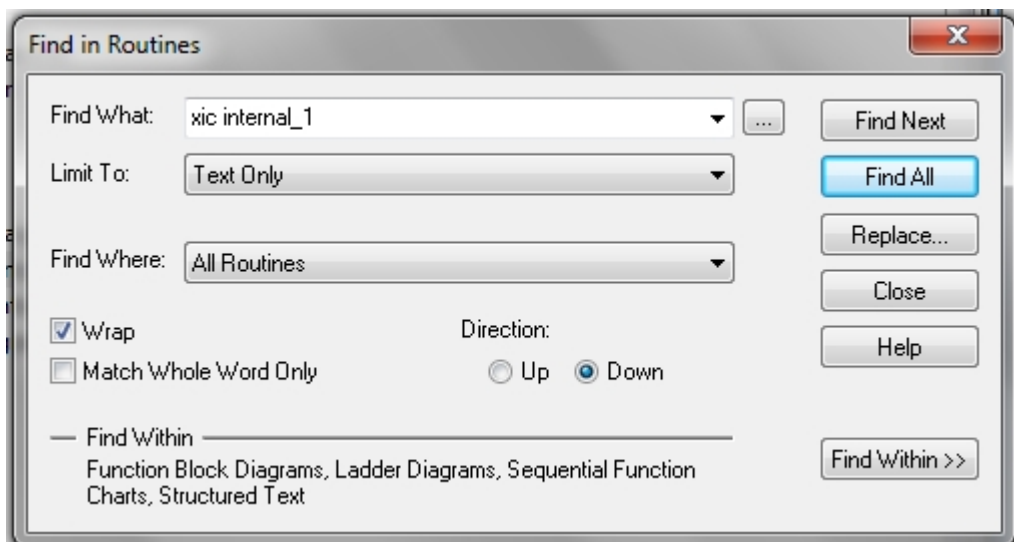


Figure 24-A. Searching for a tag and instruction type.

Configure the Find in Routine window as shown.

Click the Find All button.

List Instruction type – Routine location - Rung number – tag information for the occurrences of – xic internal\_1

---

---

---

Does the output instruction at Rung 0 of the MainRoutine show-up  
in the Search Results window? \_\_\_\_\_

Explain: \_\_\_\_\_  
\_\_\_\_\_  
\_\_\_\_\_

Note: The Quick Search / Generic Search Box can also be used to  
search for instruction types and tags.

## 9. Search and Replace

Note: Must be Offline for Search and Replace

Navigate to the Find in Routines window and search for the tag  
Internal\_1

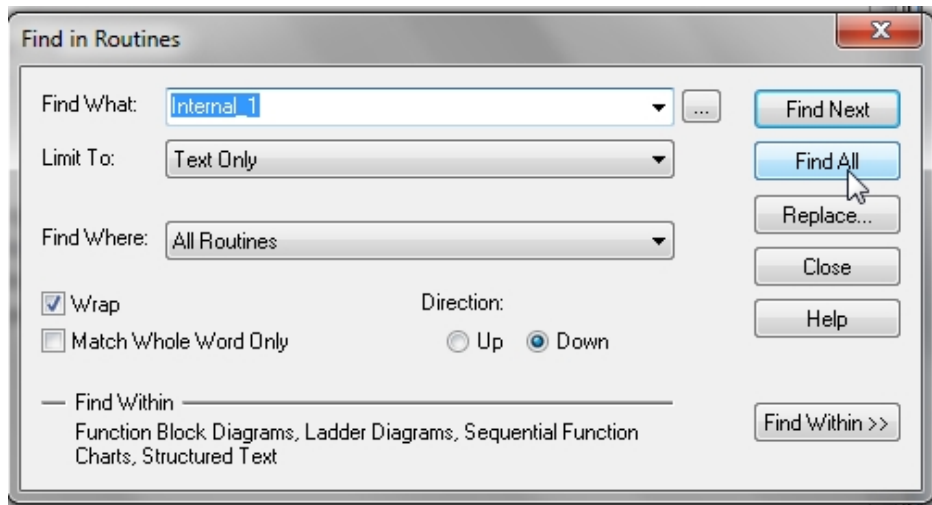


Figure 25-A. Searching for text only.

Configure the Find in Routine window as shown.

Click the Find All button.

List Instruction type – Routine location - Rung number – for the Internal\_1  
tag



---

---

---

---

Navigate to the Replace in Routines window  
On the Menu Bar click Search -> Replace

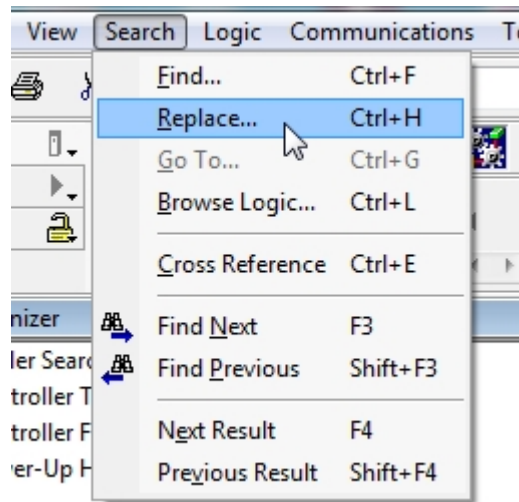


Figure 26-A. Performing a search replace.

The Replace in Routine window opens.

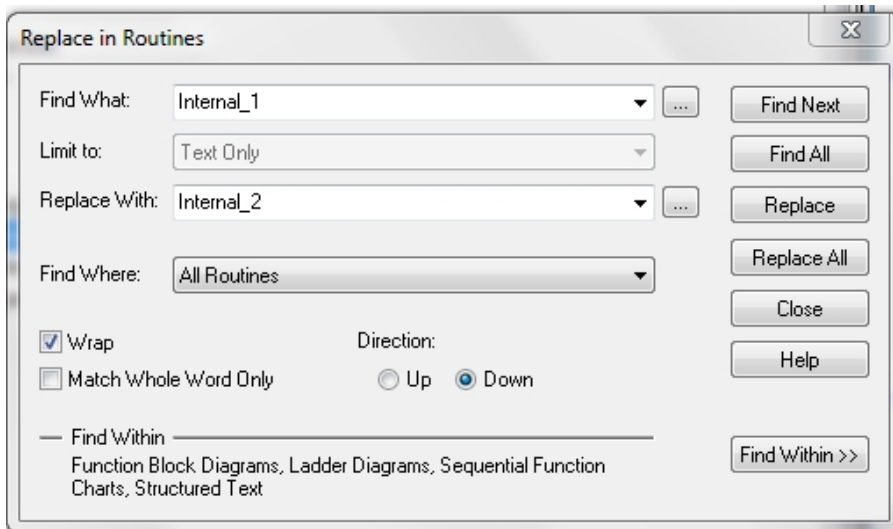


Figure 27-A. The search and replace tags.

Configure the Replace in Routine window as shown.

Click the Replace All button.

View the information in the Search Results window.

Do a Find All for the Internal\_2 tag

List Instruction type – Routine location - Rung number – for the Internal\_2 tag

---

---

---

---

Compare the information between Internal\_1 search and the Internal\_2 search

Explain: \_\_\_\_\_  
\_\_\_\_\_  
\_\_\_\_\_

Do a search for the Internal\_1 tag.

What are results of the search? \_\_\_\_\_

### DOL DISCLAIMER:

This product was funded by a grant awarded by the U.S. Department of Labor's Employment and Training Administration. The product was created by the grantee and does not necessarily reflect the official position of the U.S. Department of Labor. The Department of Labor makes no guarantees, warranties, or assurances of any kind, express or implied, with respect to such information, including any information on linked sites and including, but not limited to, accuracy of the information or its completeness, timeliness, usefulness, adequacy, continued availability, or ownership.



This work is licensed under a [Creative Commons Attribution 4.0 International License](https://creativecommons.org/licenses/by/4.0/).