

PLC220 Lab 2: Configuring an Ethernet I/P Driver

Required Materials

- ControlLogix Demo Board with 1756-L71 processor and Ethernet Communication Module
- Computer with Studio 5000 and RSLinx software
- Ethernet TP cable(s)
- Lesson File – Module 1 Lesson 1.0 – Ethernet ETHIP Driver
RSLinx / Studio 5000 Configuration

1. Verify connection between Demo Board and computer using the available ETHIP driver.

Note: Ask Instructor for assistance if there is no Ethernet connection

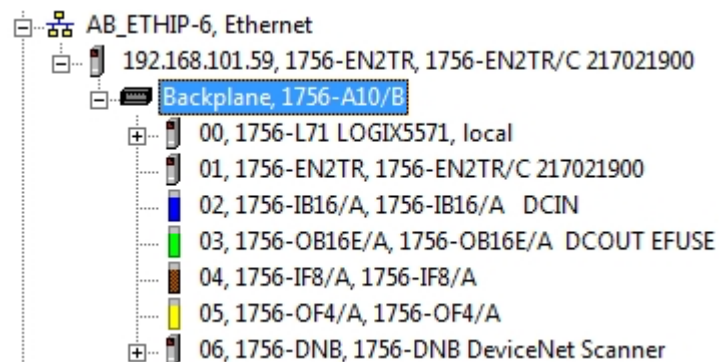


Figure 1 – A. Viewing information on a driver in RSWho.

2. Using Module 1 Lesson 1.0 – Ethernet ETHIP Driver RSLinx / Studio 5000 Configuration install a new Ethernet IP driver to RSLinx

3. Name the new driver as:

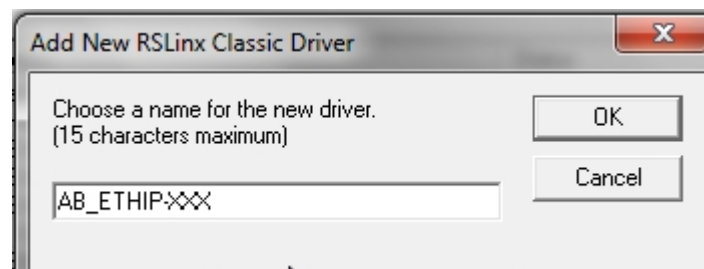


Figure 2 –A. Naming the RSLinx driver.
Where XXX are your initials.

4. Verify operation of new ETHIP Driver.

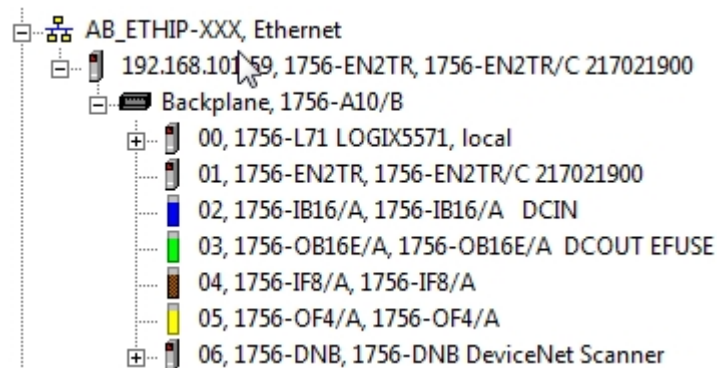


Figure 3 – A. The new driver in RSLinx.

DOL DISCLAIMER:

This product was funded by a grant awarded by the U.S. Department of Labor's Employment and Training Administration. The product was created by the grantee and does not necessarily reflect the official position of the U.S. Department of Labor. The Department of Labor makes no guarantees, warranties, or assurances of any kind, express or implied, with respect to such information, including any information on linked sites and including, but not limited to, accuracy of the information or its completeness, timeliness, usefulness, adequacy, continued availability, or ownership.



This work is licensed under a [Creative Commons Attribution 4.0 International License](https://creativecommons.org/licenses/by/4.0/).