



This work by the National Information Security and Geospatial Technologies Consortium (NISGTC), and except where otherwise noted, is licensed under the [Creative Commons Attribution 3.0 Unported License](https://creativecommons.org/licenses/by/3.0/).

Authoring Organization: Collin College

Written by: Original Author, Elizabeth Pannell; Edited Version, Susan Sands

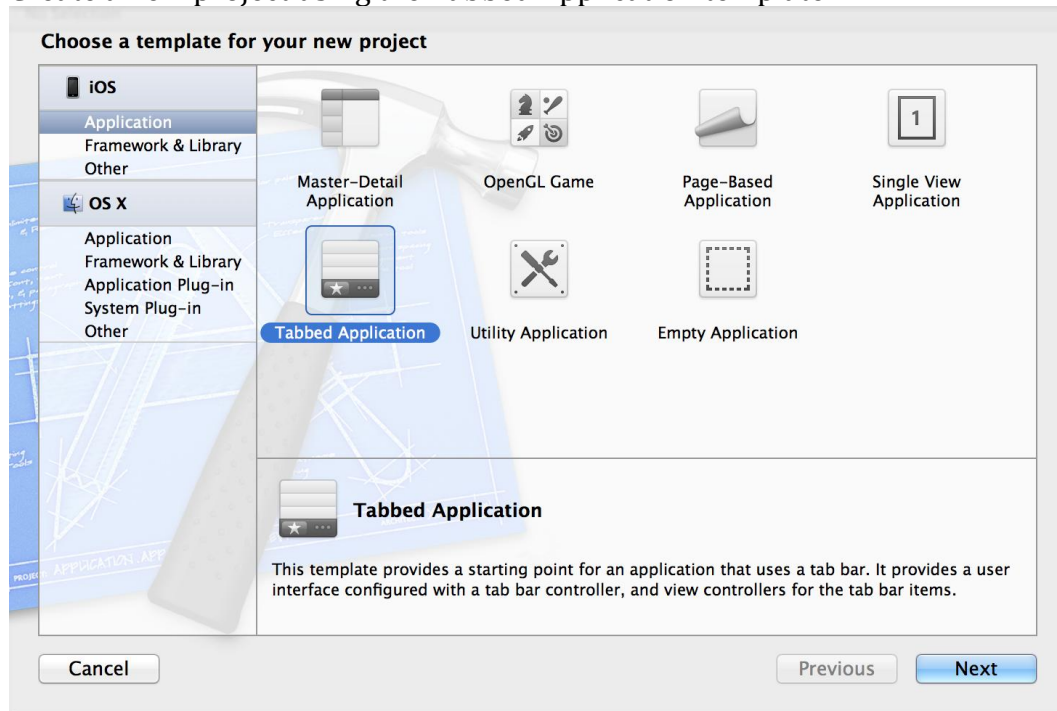
Copyright: © National Information Security, Geospatial Technologies Consortium (NISGTC)

Development was funded by the Department of Labor (DOL) Trade Adjustment Assistance Community College and Career Training (TAACCCT) Grant No. TC-22525-11-60-A-48; The National Information Security, Geospatial Technologies Consortium (NISGTC) is an entity of Collin College of Texas, Bellevue College of Washington, Bunker Hill Community College of Massachusetts, Del Mar College of Texas, Moraine Valley Community College of Illinois, Rio Salado College of Arizona, and Salt Lake Community College of Utah.

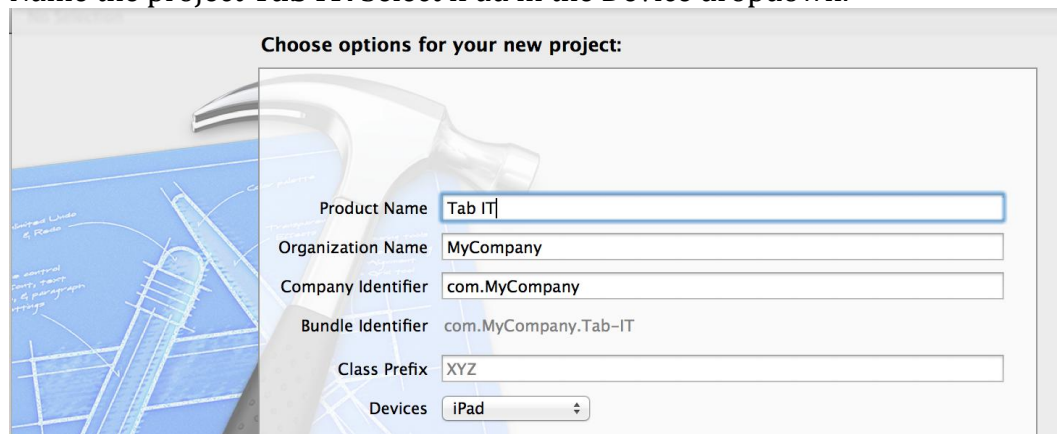
This workforce solution was funded by a grant awarded by the U.S. Department of Labor's Employment and Training Administration. The solution was created by the grantee and does not necessarily reflect the official position of the U.S. Department of Labor. The Department of Labor makes no guarantees, warranties or assurances of any kind, express or implied, with respect to such information, including any information on linked sites, and including, but not limited to accuracy of the information or its completeness, timeliness, usefulness, adequacy, continued availability or ownership.

Practice Example—Tab Bar

1. Create a new project using the Tabbed Application template.



2. Name the project **Tab IT**. Select iPad in the Device dropdown.



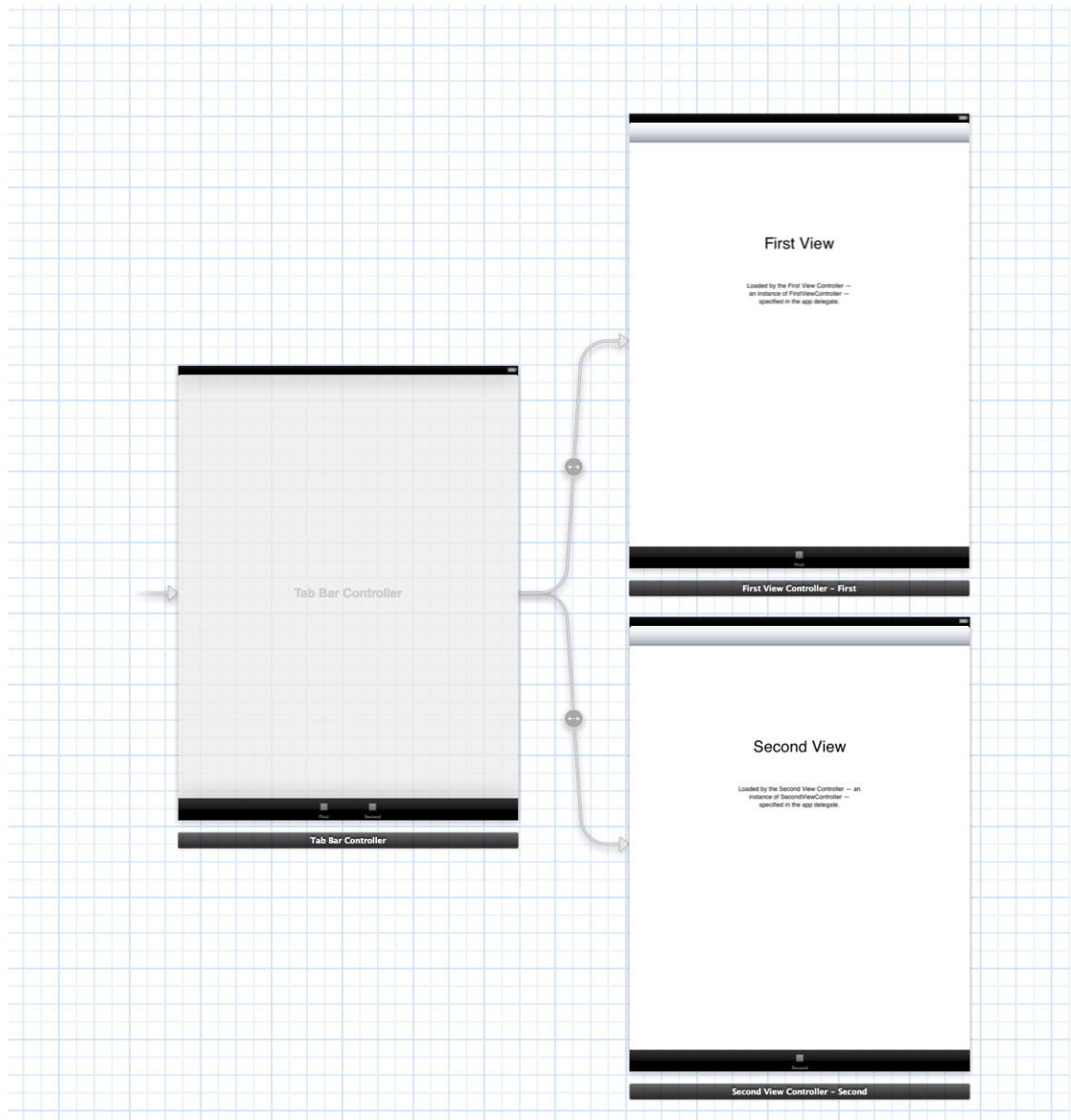
This work by the National Information Security and Geospatial Technologies Consortium (NISGTC), and except where otherwise noted, is licensed under the [Creative Commons Attribution 3.0 Unported License](https://creativecommons.org/licenses/by/3.0/).

Authoring Organization: Collin College

Written by: Original Author, Elizabeth Pannell; Edited Version, Susan Sands

Copyright: © National Information Security, Geospatial Technologies Consortium (NISGTC)

3. Select the mainstoryboard and change the labels on the first scene to be Flowers and the label on the second scene to be Trees.



4. Drag another ViewController and add (or copy) a label and name it Grasses.



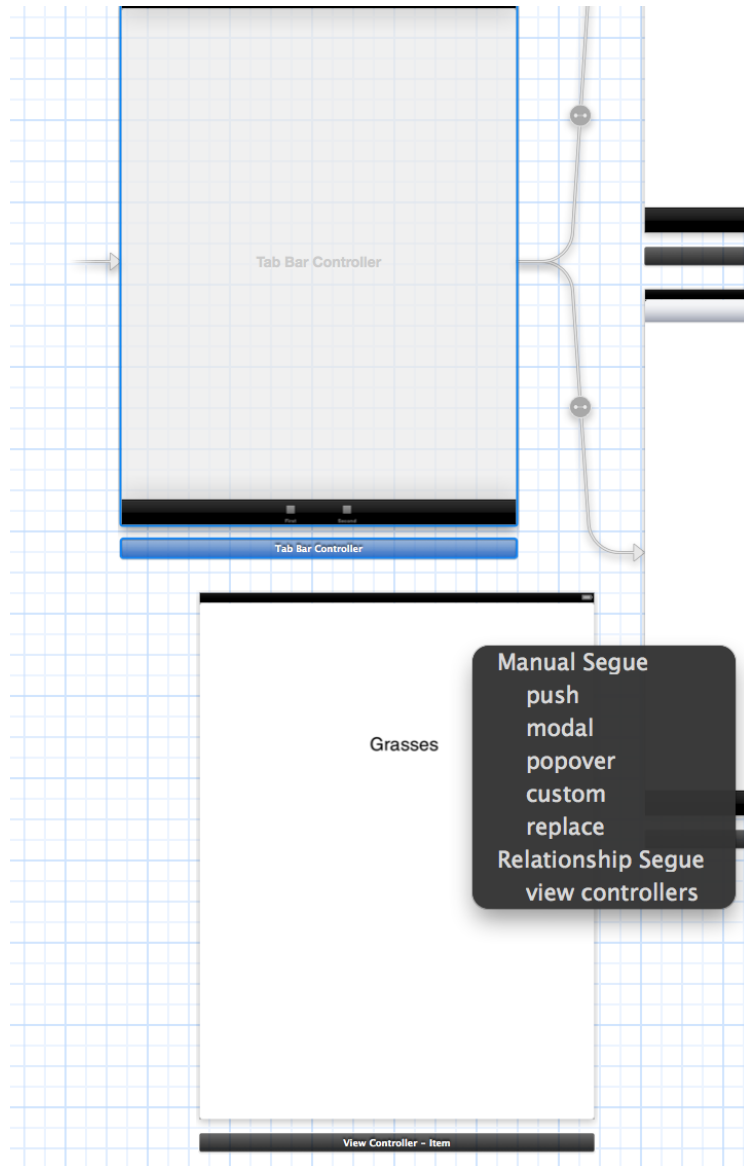
This work by the National Information Security and Geospatial Technologies Consortium (NISGTC), and except where otherwise noted, is licensed under the [Creative Commons Attribution 3.0 Unported License](https://creativecommons.org/licenses/by/3.0/).

Authoring Organization: Collin College

Written by: Original Author, Elizabeth Pannell; Edited Version, Susan Sands

Copyright: © National Information Security, Geospatial Technologies Consortium (NISGTC)

- Control drag from Tab Bar Controller to the Grasses View and select relationship Segue (viewController) from the pop up. A new tab appears.



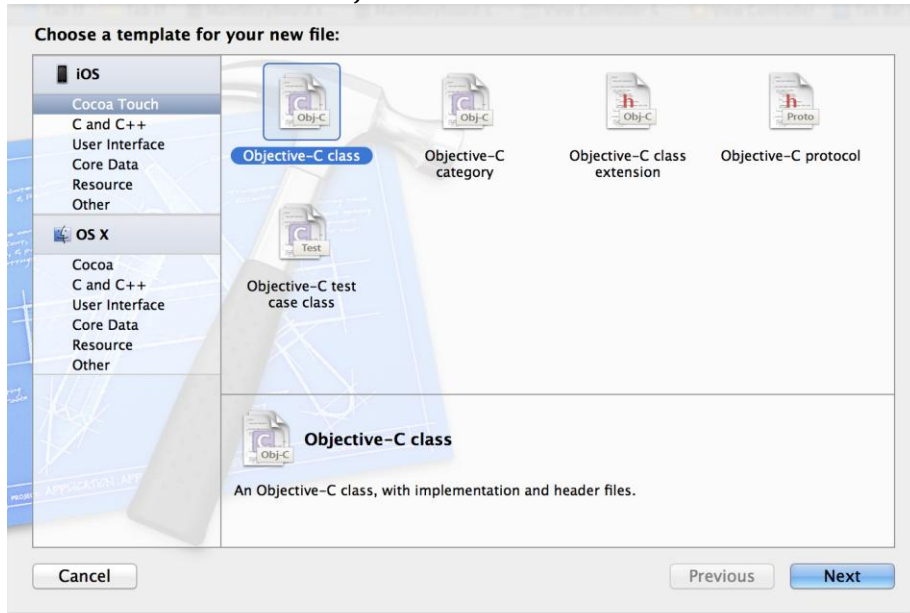
This work by the National Information Security and Geospatial Technologies Consortium (NISGTC), and except where otherwise noted, is licensed under the [Creative Commons Attribution 3.0 Unported License](https://creativecommons.org/licenses/by/3.0/).

Authoring Organization: Collin College

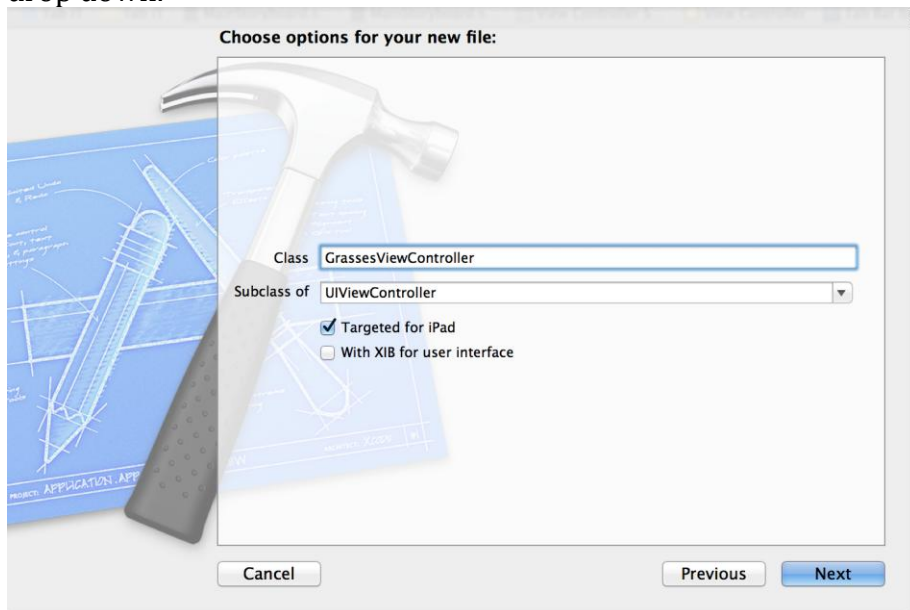
Written by: Original Author, Elizabeth Pannell; Edited Version, Susan Sands

Copyright: © National Information Security, Geospatial Technologies Consortium (NISGTC)

6. Go to file>new file and objective-C class to create a new ViewController



7. Name the Class **GrassesViewController**. Select UIViewController from the drop down.



8. Select the ViewController with the Grasses label.

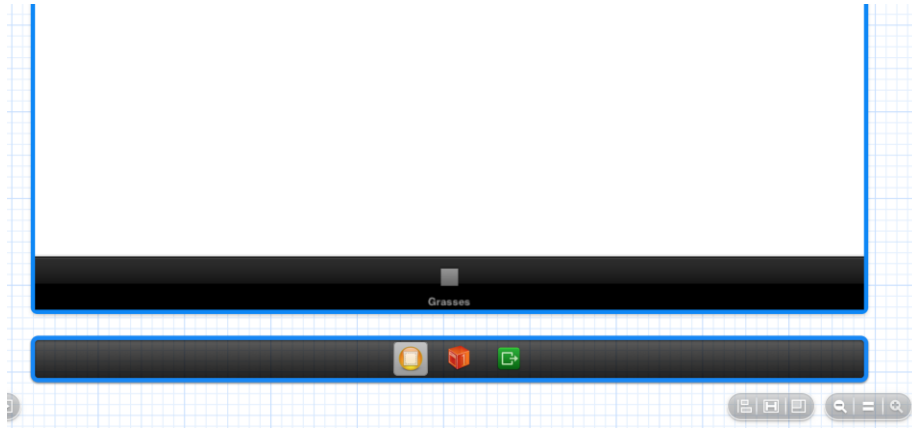


This work by the National Information Security and Geospatial Technologies Consortium (NISGTC), and except where otherwise noted, is licensed under the [Creative Commons Attribution 3.0 Unported License](https://creativecommons.org/licenses/by/3.0/).

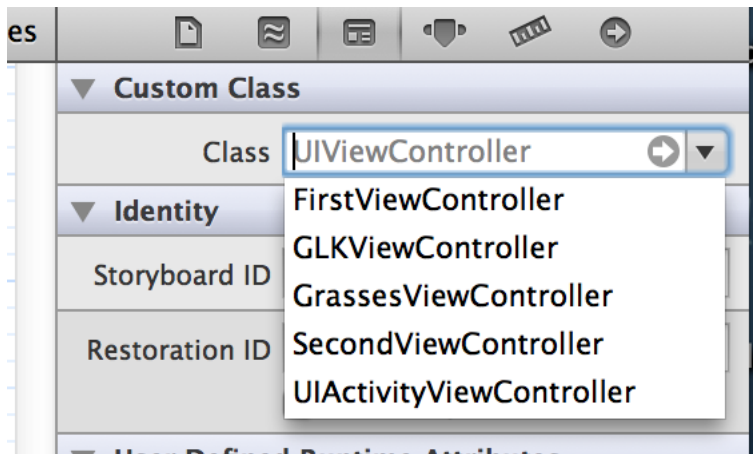
Authoring Organization: Collin College

Written by: Original Author, Elizabeth Pannell; Edited Version, Susan Sands

Copyright: © National Information Security, Geospatial Technologies Consortium (NISGTC)



9. In the identity inspector, change the class to GrassesViewController.



10. Change the tab name to reflect the title of each view Controller.



This work by the National Information Security and Geospatial Technologies Consortium (NISGTC), and except where otherwise noted, is licensed under the [Creative Commons Attribution 3.0 Unported License](https://creativecommons.org/licenses/by/3.0/).

Authoring Organization: Collin College

Written by: Original Author, Elizabeth Pannell; Edited Version, Susan Sands

Copyright: © National Information Security, Geospatial Technologies Consortium (NISGTC)